

This document is the Accepted Manuscript version of a Published Work that appeared in final form in Industrial & Engineering Chemistry Research, © 2020 American Chemical Society after peer review and technical editing by the publisher.

To access the final edited and published work is available online at:
<https://doi.org/10.1021/acs.iecr.9b06796>

Bio-recovery of metals from a stainless-steel industrial effluent through denitrification performed in a novel anaerobic swirling fluidized membrane bioreactor (ASFMBR)

J. Ernesto Ramirez, Saúl Esquivel-González, Jose Rene Rangel Mendez, Sonia Arriaga, Marisol Gallegos-García, Germán Buitrón, and Francisco J. Cervantes

Ind. Eng. Chem. Res., **Just Accepted Manuscript** • DOI: 10.1021/acs.iecr.9b06796 • Publication Date (Web): 28 Jan 2020

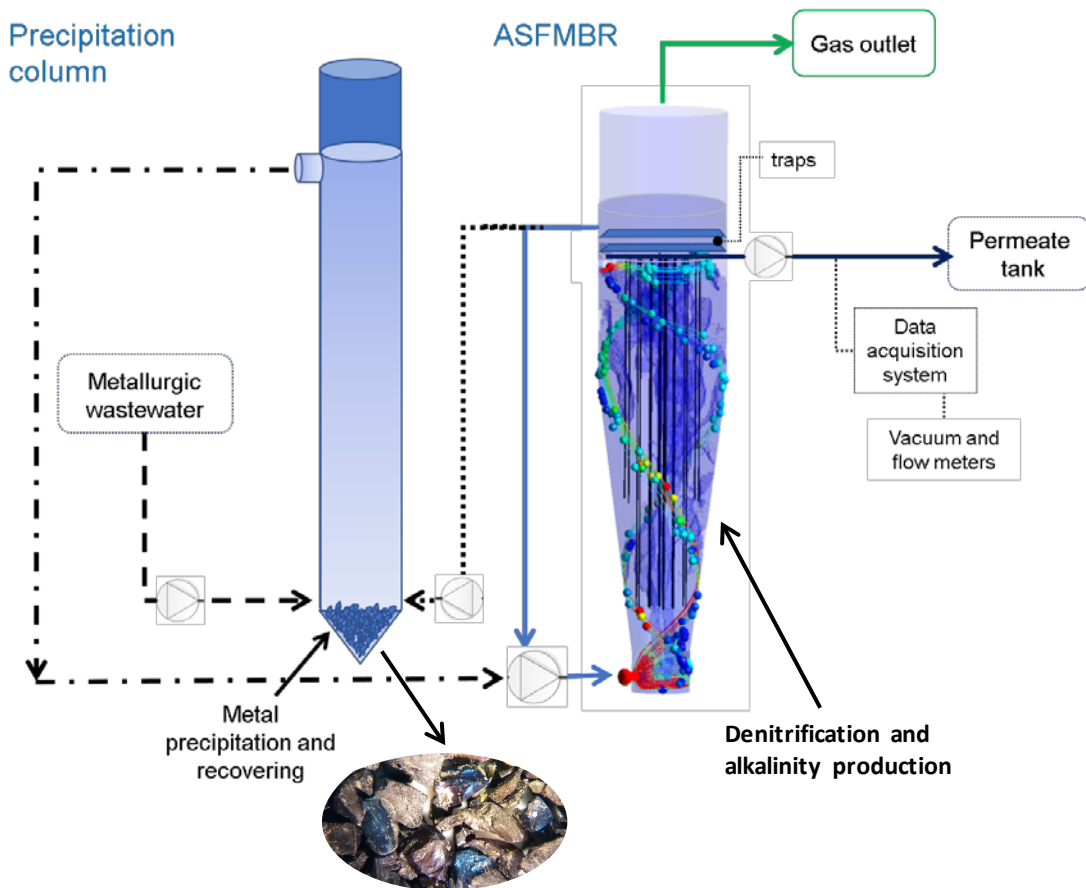
Downloaded from pubs.acs.org on January 30, 2020

Just Accepted

“Just Accepted” manuscripts have been peer-reviewed and accepted for publication. They are posted online prior to technical editing, formatting for publication and author proofing. The American Chemical Society provides “Just Accepted” as a service to the research community to expedite the dissemination of scientific material as soon as possible after acceptance. “Just Accepted” manuscripts appear in full in PDF format accompanied by an HTML abstract. “Just Accepted” manuscripts have been fully peer reviewed, but should not be considered the official version of record. They are citable by the Digital Object Identifier (DOI®). “Just Accepted” is an optional service offered to authors. Therefore, the “Just Accepted” Web site may not include all articles that will be published in the journal. After a manuscript is technically edited and formatted, it will be removed from the “Just Accepted” Web site and published as an ASAP article. Note that technical editing may introduce minor changes to the manuscript text and/or graphics which could affect content, and all legal disclaimers and ethical guidelines that apply to the journal pertain. ACS cannot be held responsible for errors or consequences arising from the use of information contained in these “Just Accepted” manuscripts.

1
2
3
4
5
6
7
8
9
10
11
12
13
14
15
16
17
18
19
20
21
22
23
24
25
26
27
28
29
30
31
32
33
34
35
36
37
38
39
40
41
42
43
44
45
46
47
48
49
50
51
52
53
54
55
56
57
58
59
60

Graphical Abstract



1
2
3 **Bio-recovery of metals from a stainless-steel industrial effluent through denitrification**
4
5 **performed in a novel anaerobic swirling fluidized membrane bioreactor (ASFMBR)**
6
7

8 J. Ernesto Ramírez¹, Saúl Esquivel-González¹, J. René Rangel-Mendez¹, Sonia L. Arriaga¹, Marisol
9
10 Gallegos-García², Germán Buitrón³, Francisco J. Cervantes³ *

11
12
13
14 ¹IPICYT/División de Ciencias Ambientales, Camino a la Presa San José 2055, Col. Lomas 4^a.

15
16 Sección. San Luis Potosí, 78216 Mexico

17
18
19
20 ²Facultad de Ingeniería, Universidad Autónoma de San Luis Potosí. Av. Dr. Manuel Nava No. 8,
21
22 San Luis Potosí, SLP, 78290, Mexico

23
24
25 ³Laboratory for Research on Advanced Processes for Water Treatment, Engineering Institute,
26
27 Campus Juriquilla, Universidad Nacional Autónoma de México (UNAM), Blvd. Juriquilla 3001,
28
29 76230 Querétaro, Mexico

30
31
32
33 *Corresponding author. E-mail: FCervantesC@iingen.unam.mx
34
35
36
37
38
39

40 **ABSTRACT**

41
42 A novel technology was developed for the treatment of a stainless-steel wastewater, which
43
44 contains high nitrate concentration (6.8 g N-NO₃⁻/L), acidic pH (pH=3.3) and high concentration
45
46 of metals. Denitrification was performed in an Anaerobic Swirling Fluidized Bed Membrane
47
48 Bioreactor (ASFMBR) with synthetic and real wastewater. The treatment concept was also
49
50 integrated by a precipitation column in which high recirculation of the alkalinity produced from
51
52 denitrification was introduced to drive the precipitation and recovery of metals present in the
53
54
55
56
57
58
59
60

1
2
3 wastewater. The novel reactor configuration achieved high nitrate removal (>94 %) and the acidic
4
5 pH was efficiently neutralized in the reactor, by recycling the alkalinity produced from
6
7 denitrification. More than 40% of the metals present in the industrial wastewater was recovered.
8
9
10 Membrane fouling was avoided by the hydrodynamic regime established in the ASFMBR. The
11
12 treatment concept is promising to achieve efficient removal of nitrate and recovery of metals
13
14 from metallurgic wastewater.
15
16
17
18
19
20

21 **1. INTRODUCTION**

22
23
24 Biological treatment of industrial wastewaters is challenging due to their complex, and
25
26 sometimes extreme, physicochemical conditions, and because of the presence of toxic
27
28 components, which negatively affect consortia in bioreactors.¹ Metallurgic effluents are
29
30 particularly defiant because they are highly acidic and contain large concentrations of heavy
31
32 metals and nitrate. For food and pharmaceutical industries, citric acid is used to remove a high
33
34 amount of metals due to its chelating capacity. The discharge of this type of effluents, without a
35
36 previous treatment, causes several environmental risks, such as eutrophication of water bodies,²
37
38 and toxicity to aquatic organisms due to the presence of heavy metals.³⁻⁴
39
40
41
42
43
44

45 Denitrification is a cost-effective process widely applied to remove nitrate from wastewaters.⁵
46
47 During denitrification, nitrate (NO_3^-) is sequentially converted to nitrite (NO_2^-), nitric oxide (NO),
48
49 nitrous oxide (N_2O) and dinitrogen gas (N_2).⁶ Heavy metals present in metallurgic effluents could
50
51 contribute as trace elements to carry out denitrification since denitrifying microorganisms
52
53 require cofactors, such as Fe, Cu and Mo.⁷ However, high concentrations of heavy metals can
54
55
56
57
58
59
60

1
2
3 inhibit denitrification, resulting in the accumulation of NO_2^- and N_2O .⁸⁻¹² NO_2^- causes
4 eutrophication of water bodies and triggers the formation of carcinogenic amines,² while N_2O is
5 a potent greenhouse gas.¹³ Likewise, denitrification could also be affected by the acidic pH of
6 metallurgic effluents.¹⁴
7
8
9
10
11

12
13 A strategy to decrease the negative effects of metals to microorganisms is their precipitation and
14 recovery from the metallurgic wastewater. In the last years, biotechnologies have been applied
15 as metals recovery techniques with high efficiency at low cost.¹⁵ The alkalinity produced in
16 denitrifying processes could be recycled to achieve neutralization of acidic metallurgic effluents,
17 which could also promote the precipitation of heavy metals present in this type of wastewaters.
18
19 Nevertheless, several mechanisms involved in metals removal in bioreactors should be
20 considered. These mechanisms include physical retention of heavy metals precipitated in sludge
21 flocs; integration, adsorption and complexation of metallic ions with soluble microbial products
22 (SMP); adsorption and diffusivity of metallic ions in biomass particles; as well as precipitation
23 triggered by the alkalinity¹⁶ or by coprecipitation with other biogenic solids.¹⁷
24
25
26
27
28
29
30
31
32
33
34
35
36
37
38

39 Citrate plays an important role in denitrification as an electron donor. At the same time, its
40 complexing capacity modifies the bioavailability of both metals and citrate to microorganisms,
41 affecting the rate of the process. However, citrate biodegradation releases complexed metals,
42 which could in turn be precipitated with denitrification by-products (OH^- , CO_3^{2-}). Previous studies
43 elucidated the mechanisms involved in denitrification with citrate as electron donor in the
44 presence of three of the main metals present in effluents from the stainless-steel industry
45 (Fe(III)/Fe(II), Cr(III), Ni(II)).⁹ However, further studies are demanded to understand the
46 mechanisms involved during the treatment of metallurgic effluents.
47
48
49
50
51
52
53
54
55
56
57
58
59
60

1
2
3 Anaerobic Fluidized Bed Reactors (FBR) with a denitrifying biofilm supported on granular
4 activated carbon (GAC) have been used as a promising strategy to decrease the inhibitory effects
5
6 of heavy metals by high dilution rates imposed inside of the reactors and by pH neutralization of
7
8 the acidic feed with denitrification byproducts. Additionally, precipitation of heavy metals by
9
10 products derived from denitrification has also been observed.^{8,12} However, despite high nitrate
11
12 removal and pH neutralization obtained, heavy metals precipitation remains low, yielding an
13
14 effluent with high metals content.¹⁸ Membrane bioreactors have been used to increase the
15
16 removal of inorganic components in anaerobic membrane bioreactors (MBR),¹⁹ to comply with
17
18 environmental regulations. Heavy metals in MBR can be joined to sludge components and be
19
20 rejected by the membranes.²⁰ However, heavy metals in MBR have shown negative effects on
21
22 the biological process, as well as on membrane fouling.^{16,21}
23
24
25
26
27
28
29
30

31 In the present work, the capacity of a novel Anaerobic Swirling Fluidized Membrane Bed
32
33 Bioreactor (ASFMBR) to achieve denitrification of synthetic and real metallurgic wastewater was
34
35 tested. A precipitation column was integrated to the ASFMBR in order to neutralize the
36
37 metallurgic effluent and to promote metals recovery.
38
39
40

41 **2. MATERIALS AND METHODS**

42
43

44 **2.1. Biofilm formation.** A coconut-shell based granular biochar (GC) with a size between 0.4 and
45
46 2.38 mm was used as supporting material for the biofilm, which was formed by mixing clean GC
47
48 and disintegrated anaerobic granular sludge previously acclimated under denitrifying conditions.
49
50 The anaerobic granular sludge originated from a wastewater treatment plant treating effluents
51
52 from a brewery (Cd. Obregón, Mexico). Biofilm formation was performed in two up-flow
53
54
55
56
57
58
59
60

1
2
3 anaerobic sludge blanket (UASB) reactors with a working volume of 1.1 L. Both reactors were fed
4
5 with 500 mg N-NO₃⁻/L and were supplied with stoichiometric amounts of either ethanol or citrate
6
7 as electron donors. The columns were operated almost for three months until reaching steady
8
9 state conditions. The basal medium had the following composition (mg/L): KH₂PO₄, 300;
10
11 MgSO₄·7H₂O, 61.3; FeSO₄·7H₂O, 17.2; CaCl₂·2H₂O, 75 and 1 mL/L of trace elements.⁹
12
13
14
15

16 **2.2. Operational conditions.** The ASFMBR was operated both with synthetic and real metallurgic
17
18 wastewater. Synthetic wastewater contained the main metals present in the real wastewater
19
20 (Fe(II)/Fe(III), Cr(III), Ni(II)). These metals were tested in individual form and jointly using citric
21
22 acid as electron donor. The real wastewater originated from a stainless-steel company
23
24 (Querétaro, Mexico, Table 1). Citric acid and ethanol were tested as electron donors under the
25
26 conditions described in Table 2. The treatment concept was integrated by a precipitation column
27
28 (Fig. 1). The precipitation column was of 1.1 L, from which the flow was pumped to the ASFMBR
29
30 by a centrifugal pump through a tangential inlet located in the lower part of the conical section
31
32 (see Fig 1), which together with the geometry, creates a swirling fluidization inside the reactor.
33
34 The tangential inlet serves as diffuser of the scoring media. The recirculation flow rate was
35
36 adjusted to 3.8 L/min to expand the GC particles in the entire reactor covering the membranes.
37
38 A portion of 150 mL of GC from the column of biofilm formation was added to the ASFMBR, which
39
40 corresponds to 0.56 g of volatile suspended solids (VSS)/L. The microfiltration module with
41
42 porous size of 0.1 μm was submerged in the reactor and was composed of 18 hollow fiber
43
44 membranes of polyvinylidene fluoride (PVDF) with an external diameter of 1.2 mm. The outlet
45
46 (permeate) was equipped with pressure and flow sensors to monitor membrane fouling. Every
47
48 testing period was conducted as a new experiment, with a preliminary operational stage in the
49
50
51
52
53
54
55
56
57
58
59
60

1
2
3 absence of metals to reach denitrifying steady state conditions before every test. The hydraulic
4 retention time (HRT) during the treatment of real wastewater was adjusted to obtain a similar
5 nitrate load as compared to the experiments performed with synthetic wastewater. The
6 concentration of NO_3^- , NO_2^- , NH_4^+ , metals in solution, as well as pH and redox potential (ORP)
7 were measured in the sampling points shown in Fig. 1. Additionally, total suspended solids (TSS),
8 and SMP in terms of carbohydrates (SMPC) and proteins (SMPp) were monitored in the reactor
9 and permeate line. At the upper part of the reactor, gas samples were taken for N_2O
10 measurements.
11
12
13
14
15
16
17
18
19
20
21
22

23 Table 1. Characterization of wastewater generated from a stainless-steel industry.*
24
25

	mg/L	Element	mg/L	Element	mg/L	Element	mg/L
			12505.7 ±				
N- NO_3^-	6864.8 ± 100.2	Fe	110.1	K	48.3 ± 3.0	Pb	13.5 ± 2.3
N- NO_2^-	48.15 ± 4.9	Cr	2912.3 ± 111.5	B	45.6 ± 8.8	Cu	12.6 ± 1.0
N- NH_4^+	93.4 ± 6.2	Ni	2211.5 ± 53.7	Co	37.5 ± 0.7	V	12.5 ± 0.4
COD	0.0	Sn	836.5 ± 14.2	Na	33.7 ± 2.0	Mg	5.4 ± 0.1
		Mn	579.5 ± 32.3	P	28.6 ± 1.6		
pH, pH units	3.3	Si	243.7 ± 5.4	Ca	26.5 ± 4.4		
ORP, mV	170.0	Mo	87.3 ± 3.7	Al	13.8 ± 0.6		

26
27
28
29
30
31
32
33
34
35
36
37
38
39
40
41
42
43
44
45
46
47
48
49 *Reported data represent average from triplicate measurements ± standard deviation.
50
51
52
53
54
55
56
57
58
59
60

Table 2. Experimental conditions for the coupled system precipitation column-ASFMBR.

Test	Fe	Cr	Ni	Fe-Cr-Ni	Real effluent	Real effluent	
electron donor, g C/g N	citrate, 2.26					ethanol,	
						1.43	
N-NO ₃ ⁻ , mg/d	793.7	756.6	762.6	765.6	854.5	849.2	
N-NO ₂ ⁻ , mg/d	0	0	0	0	4.1	3.1	
N-NH ₄ ⁺ , mg/d	0	0	0	0	33.1	54.9	
Fe, mg/d	217.6	0	0	186.2	1755.8		
Cr, mg/d	0	122.5	0	126.9	387.2		
Ni, mg/d	0	0	45.1	44.2	299.0		
pH, pH units	2.02	2.10	2.27	2.04	3.16	2.21	
HRT, h - precipitation							
column	8.3					91.7	
HRT, h – ASFMBR	26					287.8	
Membrane flux, L/m ² /h	3.4					0.31	

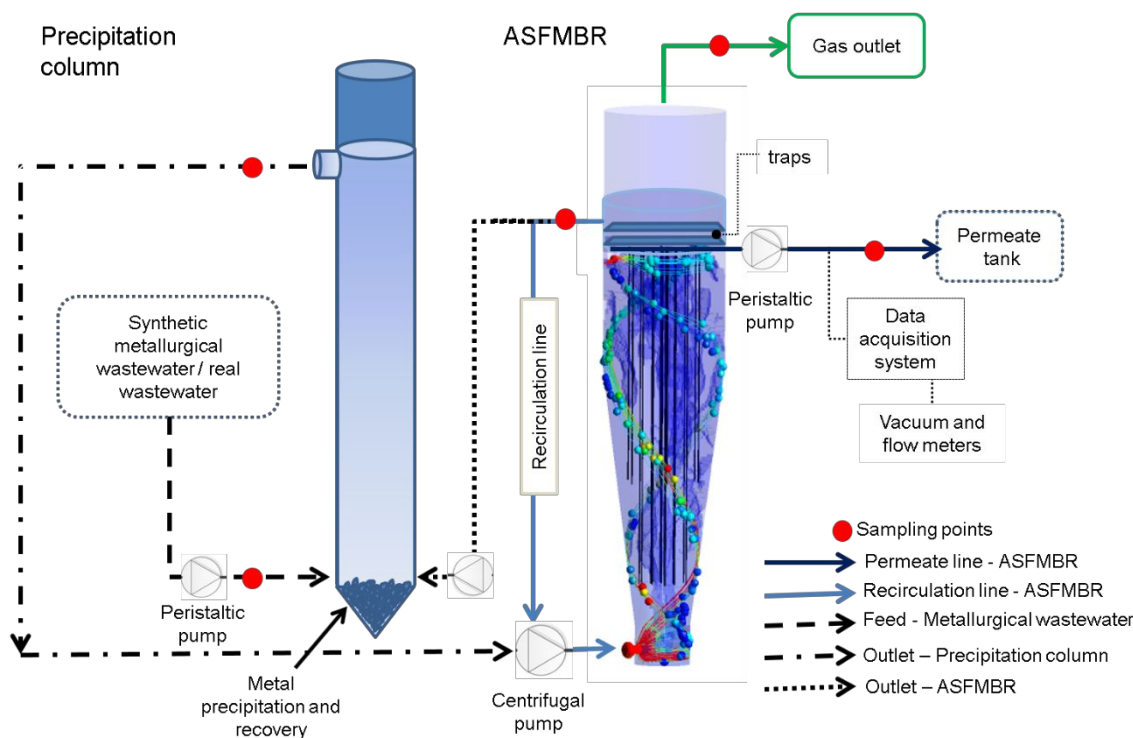


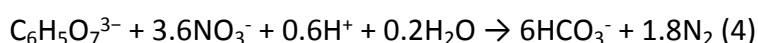
Figure 1. Experimental set-up of the coupled system precipitation column-ASFMBR.

2.3. Analysis. NO_3^- , NO_2^- , NH_4^+ , TSS and VSS were measured according to APHA methods.²² N_2O and citrate were measured as described before.⁹ VSS measurement on GC particles was conducted by detachment of the biofilm of 1 g of GC in 10 mL of distilled water by ultra-sound treatment for 30 min. The soluble concentration of proteins and carbohydrates were determined by the colorimetric methods of Bradford²³ and Dubois,²⁴ respectively. At the end of the experimentation, samples of GC circulating from the conical and cylindrical sections of the reactor were taken to measure the amount of adsorbed metals. A section of 1 cm of height of the membrane was cut at different heights of the reactor to determine metal deposition. Metal extraction from GC particles and membranes was accomplished by organic matter oxidation with

H₂O₂ and acidic digestion. Samples for heavy metals measurements were filtered through 0.45 μm and analyzed by ICP-OES. Ferrous iron was determined by the ferrozine method.²⁵ Minerals recovered in the precipitation column and in the ASFMBR were analyzed by XRD.

3. RESULTS AND DISCUSSION

3.1. Performance of the ASFMBR. Denitrification was initially evaluated in the ASFMBR with citrate as electron donor. The effects of the three main heavy metals present in metallurgic wastewater on denitrification were studied. Denitrification with citrate proceeds as follows:



$$\Delta G^\circ = -1881.0 \text{ kJ mol}^{-1}$$

Effects of Fe(III)/Fe(II). Iron addition to the ASFMBR resulted in an increase on nitrate and citrate removal efficiencies (Fig. 2). This stimulating effect to the denitrification process was also observed in previous reports.⁸ According to the operational conditions prevailing in the ASFMBR, the main iron-citrate species present were [Fe(II)-citrate]⁻ and [Fe(III)-citrate]. Previous experiments⁹ showed that [Fe(II)-citrate]⁻ is a very stable complex inhibiting the uptake of citrate for nitrate reduction. The structural characteristics of the metal-citrate complex has a large influence on its biodegradability. Ferric iron has been reported to form a bidentate citrate complex, which is more easily degraded than the tridentate ferrous iron-citrate complex.²⁶ Thus, degradation of the ferrous iron-citrate complex depends on its oxidation and hydrolysis to form the ferric iron-citrate complex. During the operation of the ASFMBR, the Fe(II) concentration supplied from the precipitation column was removed in the reactor so that its concentration remained below 3 mg/L in the outlet (Fig. 3). This could be due to the precipitation of minerals

containing Fe(II), or by Fe(II) oxidation linked to denitrification, with a subsequent precipitation of solids including both Fe(II) and Fe(III).

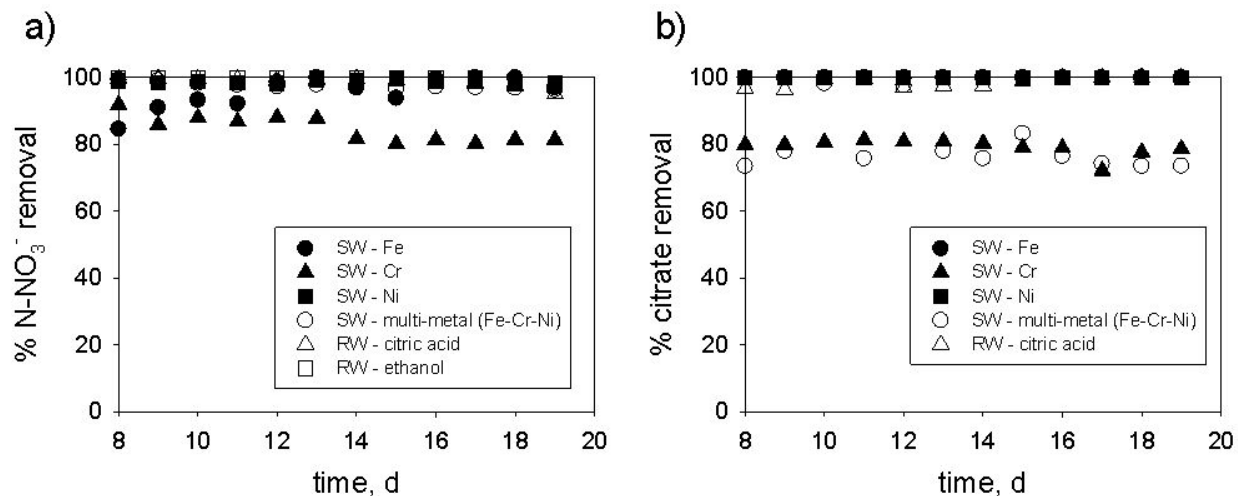


Figure 2. (a) Nitrate and (b) citrate removal during the treatment of synthetic and real wastewater. SW and RW mean synthetic and real wastewater, respectively.

Autotrophic denitrification can be improved by ferrous iron oxidation.²⁷ In the present work, Fe(II) could have improved nitrate removal, promoting the precipitation of produced Fe(III). Moreover, precipitation of Fe(II) also occurred as FeCO₃ in the traps of the reactor, which was evidenced by XRD analysis (see Fig. S1 in Supplementary material (SM)). Moreover, solid species containing Fe(II) can also serve as electron donors²⁸ contributing to denitrification.²⁷

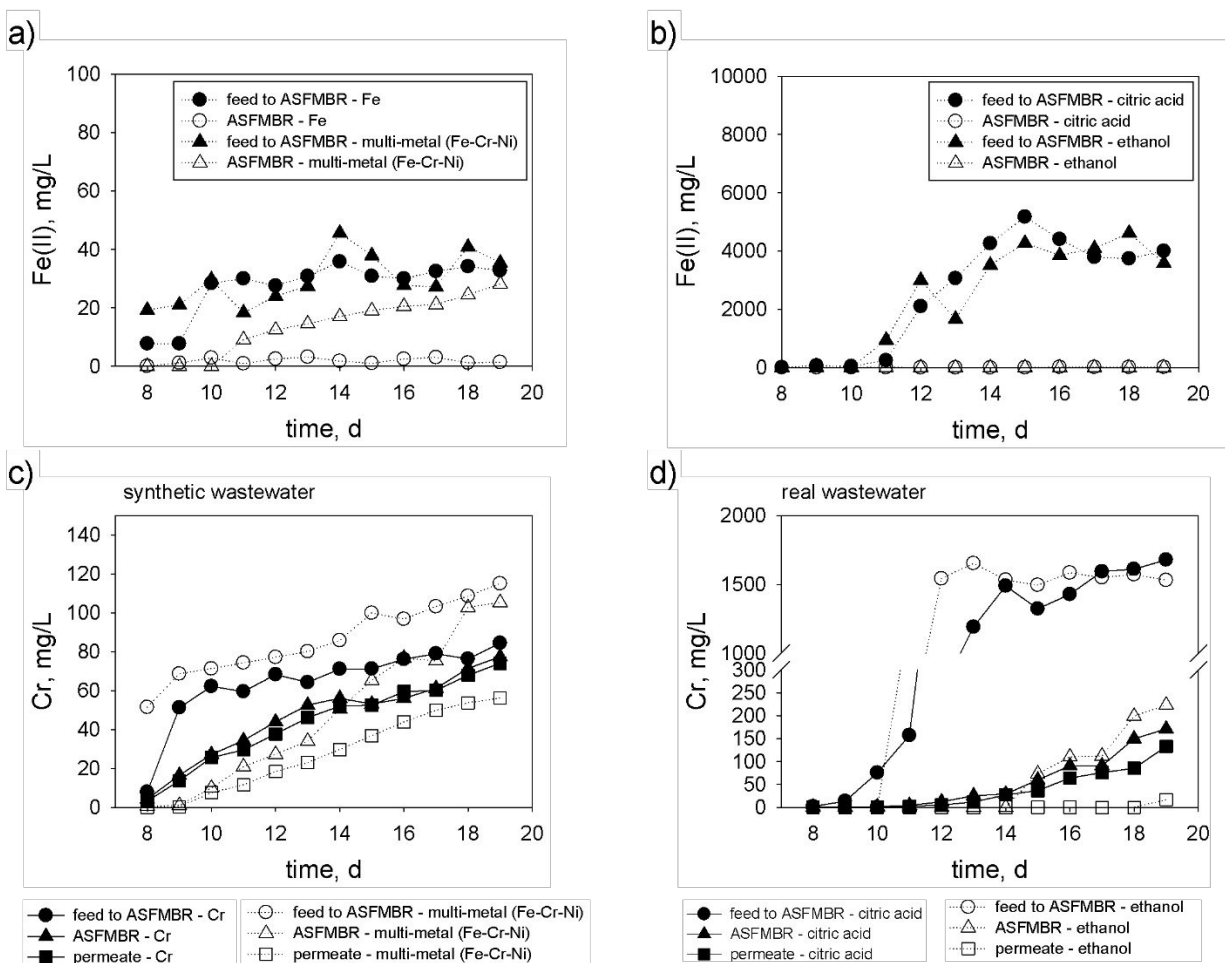


Figure 3. Fe(II) and Cr concentrations during the treatment of (a,c) synthetic and (b,d) real wastewater in the ASFMBR.

NO_2^- accumulation decreased from 5.2 ± 0.4 to 1.4 ± 0.3 mg N- NO_2^- /d with iron addition. Moreover, N_2O was produced at a lower concentration of 20.2 ± 2.6 mg N- N_2O /d (only 2 days) as compared to the reactor performance in the absence of iron. Accumulated NO_2^- and N_2O represent less than 2% of the nitrogen feed. On the other hand, biogas emission decreased with iron addition (data not shown). This could be explained by the formation of insoluble carbonates that decreased CO_2

1
2
3 emissions from the ASFMBR. Decrease on gas emissions was also observed in experiments with
4
5
6 real wastewater (see below).
7

8
9 **Effects of Cr(III).** Cr(III) addition to the ASFMBR yielded mild inhibition to denitrification. The
10
11 amount of nitrate and citrate remaining in the treated effluent was ~20% with respect to the
12
13 added concentrations (Fig. 2). Similar results were obtained in batch experiments, in which the
14
15 inhibition on nitrate removal was attributed to the stable Cr(III)-citrate complexes formed.⁹ This
16
17 stability hinders biodegradation of citrate while linked to Cr(III) (Fig. 3). However, a recent study
18
19 showed the difficulty to precipitate the complex Cr(III)-citrate under alkaline conditions,²⁹ which
20
21 was possibly associated with a very stable molecular structure formed, which prevailed
22
23 solubilized even under alkaline conditions. Hydroxides could be incorporated into the structure
24
25 of Cr(III)-bearing complexes and form polymers thereof. The formation of these complexes could
26
27 affect Cr(III) recovery and also the bioavailability of citrate for denitrification. Certainly, even
28
29 though citrate remains solubilized, microorganisms could not take it, affecting denitrification.
30
31 Nitrite reduction was not affected by Cr(III), while N₂O was produced just during two operational
32
33 days at low levels. Thus, nitrate reduction was the only denitrifying step affected by Cr(III), which
34
35 is in agreement with results obtained in batch assays.⁹
36
37
38
39
40
41
42

43
44 **Effects of Ni(II).** Nitrate removal efficiency was not affected by Ni(II) addition. These findings
45
46 contrast with those obtained in batch experiments,⁹ which showed inhibition of denitrification
47
48 and accumulation of intermediates (NO₂⁻ and N₂O). Very low NO₂⁻ concentration and absence of
49
50 N₂O were observed in the ASFMBR outlet during the operation with Ni(II). Further studies report
51
52 negligible accumulation of nitrate and nitrite by the addition of Ni (5.5 mg Ni/L) to a denitrifying
53
54 FBR.¹² However, additional works revealed inhibition in nitrate and nitrite removal at a
55
56
57
58
59
60

1
2
3 concentration of 60 mg Ni/L,¹⁸ although no accumulation of denitrification intermediates was
4
5 observed at a high Ni concentration (500 mg/L). This suggests that the hydrodynamic conditions
6
7 prevailing in the FBR and the low HRT imposed (low contact time of Ni(II) with microorganisms),
8
9 together with the insoluble Ni(II) species formed, could have alleviated the inhibitory effects of
10
11 Ni(II). In the present work, the ASFMBR was operated at a high HRT (26 h) without an apparent
12
13 inhibition of the denitrification process. In fact, high Ni(II) precipitation was observed during the
14
15 operation of the ASFMBR in the presence of this metal (Fig. 4), which could have prevented the
16
17 inhibitory effects of Ni(II) to denitrifying microorganisms. Likewise, Ni(II) toxicity could have been
18
19 mitigated by the formation of Ni complexes with dissolved organic matter. The production of
20
21 SMPp increased with Ni addition after several days of operation (Fig. S2 in SM). This result could
22
23 be due to cellular damage and release of proteins³⁰ as a mechanism of cellular protection.³¹ The
24
25 release of SMP has been reported under anaerobic conditions and these compounds showed the
26
27 capacity to form stable complexes with Ni.³² The formation of these complexes could explain the
28
29 absent of negative effects by Ni in the ASFMBR. Moreover, the hydrodynamic conditions
30
31 established in the reactor by swirling fluidization could also have played an important role on
32
33 mitigating the effects of metals.
34
35
36
37
38
39
40
41
42
43
44
45
46
47
48
49
50
51
52
53
54
55
56
57
58
59
60

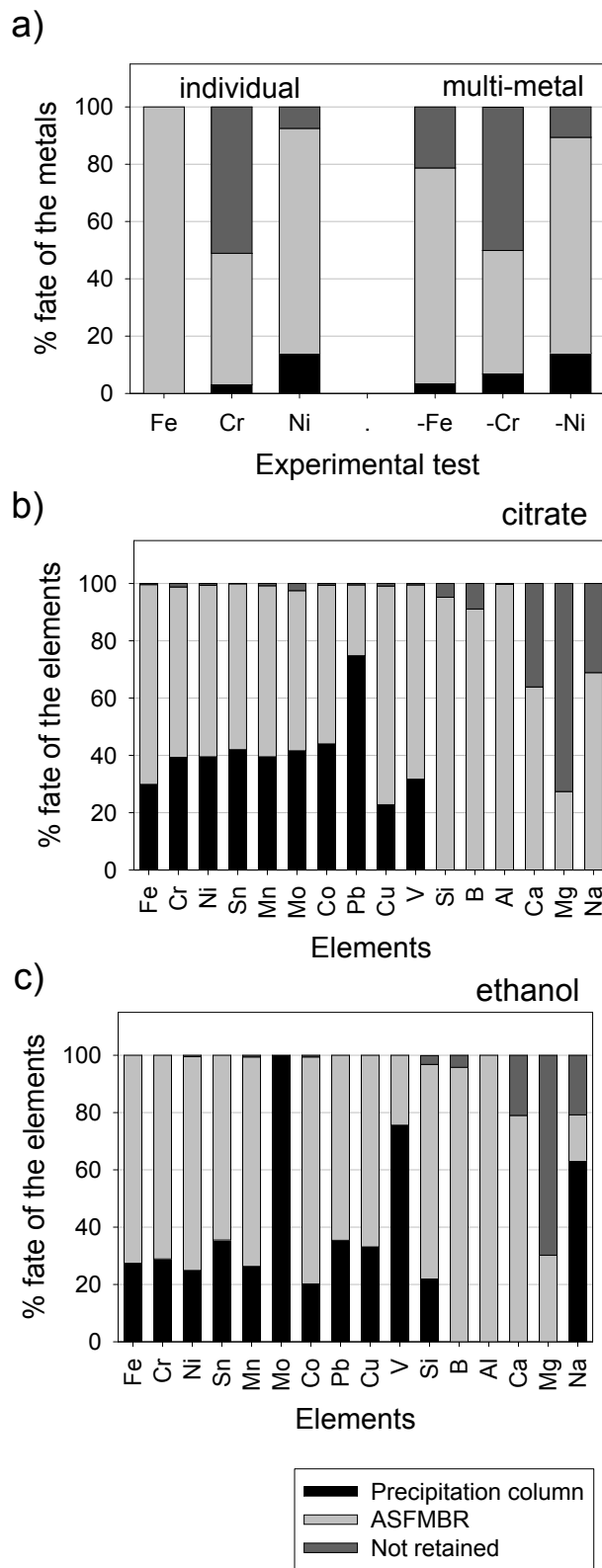


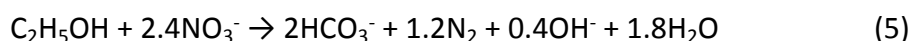
Figure 4. Fate of metals during the treatment of synthetic (a) and real metallurgic (b-c) wastewater. “Not retained” refers to elements not removed in the system and discharged with the permeate.

1
2
3 **Joined effects of Fe, Cr and Ni.** Addition of the three studied heavy metals altogether to the
4
5 ASFMBR resulted in some differences with respect to the individual tests. During these
6
7 experiments, iron precipitated to a lower extent than the experiments exploring its individual
8
9 addition. Meanwhile, Cr(III) and Ni(II) showed partial and high precipitation, respectively, during
10
11 the joined addition assays. The amount of Fe(II)/Fe(III) and Cr(III) remaining in solution (Fig. 4)
12
13 limited citrate bioavailability (Fig. 2). Nevertheless, nitrate removal efficiency was maintained
14
15 (Fig. 2), suggesting that the negative impact of Cr(III) was counteracted by the positive effects
16
17 driven by Fe and Ni addition. Autotrophic denitrification promoted by Fe(II) could have also
18
19 contributed to the denitrification performance observed. Unlike experiments conducted with Fe
20
21 alone, the concentration of Fe(II) decreased to a lower extent in experiments performed with the
22
23 three metals. In fact, Fe(II) was almost completely removed in the individual test (Fig. 3). This
24
25 difference could be due to inhibition of autotrophic denitrification caused by the presence of
26
27 Cr(III) and Ni(II), which prevented Fe(II) oxidation with a subsequent precipitation. Kiskira et al.³³
28
29 reported certain effect of Ni on Fe(II)-driven autotrophic denitrification. However, further
30
31 research is necessary to clarify the effect of Cr(III) on this process. Similar to experiments
32
33 conducted with individual addition of Fe, it was observed precipitation of solids containing Fe(II)
34
35 during the operation of the reactor with all metals evaluated. Certainly, minerals containing both
36
37 Fe(II) and Fe(III) and recovered from the treatment system include FeCO_3 , Fe_3O_4 , hematite and
38
39 ferrihydrite (Fig. S3 in SM). Production of ferrihydrite in autotrophic denitrification has been
40
41 observed.²⁷ Thus, Fe(II) oxidation could have contributed to sustain high nitrate removal
42
43 efficiency, even when citrate was less bioavailable due to prevalence of metal-complexes, mainly
44
45 including Fe(II) (Fig. 3) and Cr(III) (Fig. 3).
46
47
48
49
50
51
52
53
54
55
56
57
58
59
60

1
2
3 Accumulation of intermediates (NO_2^- and N_2O) was lower than that observed in individual tests.
4
5 Similar results were observed in batch assays previously conducted.⁹ In these tests, iron addition
6
7 stimulated the denitrification process alleviating the inhibitory effects of Ni(II) and Cr(III).
8
9 However, in batch assays, N_2O was only detected in incubations with Ni(II), while it was produced
10
11 in the Fe and Cr tests in the present study. This discrepancy could be due to the hydrodynamic
12
13 conditions prevailing in the ASFMBR.
14
15
16

17 18 **3.2. Performance of the ASFMBR treating wastewater from a stainless-steel industry.**

19
20 Denitrification of wastewater originated from a stainless-steel industry was evaluated in the
21
22 ASFMBR with both citrate and ethanol as electron donors. Denitrification with ethanol proceeds
23
24 as follows:
25
26



$$28 \quad \Delta G^\circ = -1230.7 \text{ kJ mol}^{-1}$$

29
30
31 High nitrate removal was achieved in the ASFMBR with both electron donors (Fig. 2(a)).
32
33 Considering the high iron concentration present (Table 1), Fe(II)-driven denitrification could have
34
35 contributed to nitrogen removal, as observed with synthetic wastewater. In fact, Fe(II)
36
37 concentration fed to the ASFMBR reached ~ 4 g/L, which drastically decreased to values lower
38
39 than 20 and 11 mg/L for the tests with citrate and ethanol, respectively (Fig. 3). During the
40
41 experiments with citrate, it was difficult to detect Fe-bearing minerals by XRD analysis. However,
42
43 for experiments conducted with ethanol, the main solids recovered include akaganeite $\beta\text{-FeOOH}$,
44
45 Fe_3O_4 and $\text{Fe}(\text{OH})_2$ (Fig. S4 in SM). Akaganeite is a product of Fe(III) precipitation, while magnetite
46
47 could be formed via Fe(II) oxidation.³⁴
48
49
50
51
52
53
54
55
56
57
58
59
60

1
2
3 NO₂⁻ was produced in a range of 12.4 to 37.4 mg/d with citrate, while experiments performed
4
5 with ethanol did not show accumulation of this intermediate. Furthermore, N₂O was not
6
7 detected during the treatment of the industrial effluent regardless the type of substrate supplied.
8
9
10 Ethanol was a better electron donor than citrate to achieve denitrification of the stainless-steel
11
12 industry wastewater, while a higher denitrification efficiency was obtained with citrate in
13
14 previous batch assays.⁹ This discrepancy could be due to the hydrodynamic conditions
15
16 established in the ASFMBR, but further research must be conducted to clarify these issues.
17
18
19 Ammonium was detected in very low concentrations in the reactor and permeate line for both
20
21 electron donors tested, suggesting that it was consumed to support microbial growth in the
22
23 ASFMBR.
24
25
26

27
28 Previous studies have reported inhibitory effects to denitrification by different metals. Cu has
29
30 been reported to affect nitrate removal rate and promote NO₂⁻ accumulation, while a deficient
31
32 concentration could increase N₂O production.³⁵ Nevertheless, long term exposure to Cu in
33
34 bioreactors can decrease its inhibitory effects as compared to short-term tests.³⁶ Co has also
35
36 been shown to cause nitrite accumulation,¹² while high Ca concentrations decreased
37
38 denitrification rate.³⁷ In the present work, a fraction of Cu was recovered in the precipitation
39
40 column, while a higher fraction was retained in the ASFMBR, maintaining a low concentration in
41
42 solution (Fig. 4). Thus, no inhibitory effects were expected for this metal. Similar results were
43
44 obtained with Co. Meanwhile, Ca was hardly removed in the precipitation column, but it was
45
46 significantly retained in the ASFMBR (64% and 79% removal for citrate and ethanol experiments
47
48 (Fig. 4), respectively). The large fraction of metals, which precipitated in the combined treatment
49
50 system (precipitation column/ASFMBR) might have decreased the inhibitory effects.
51
52
53
54
55
56
57
58
59
60

1
2
3 The high denitrifying efficiency achieved during the treatment of stainless-steel industry
4 wastewater was partly due to the effective neutralization of the acidic pH (Table 1), which was
5 accomplished (Fig. S5 in SM) through high recirculation of the alkalinity produced from the
6 denitrifying process with both electron donors tested. According to speciation analysis, the
7 predominant (>90% of abundance) alkalinity species formed was HCO_3^- , which reached 0.77 and
8 0.82 mol HCO_3^-/L when citrate and ethanol were tested as electron donors, respectively.
9
10
11
12
13
14
15
16
17

18 **3.3. Recovery of minerals in the treatment system and their characterization.** *Synthetic*
19 *wastewater tests.* Before metals addition, precipitation column was maintained at a pH close to
20 6 (Fig. S5 in SM). Addition of Fe(II)/Fe(III) and Cr(III) decreased the pH just after the first days of
21 metals addition, but increased to 6 afterwards. For the tests performed with nickel and the three
22 metals together, the pH of the column was controlled without important affectation in a range
23 between 7 and 8. According to the CO_2 equilibrium, neutralization of citric acid occurs by the
24 formation of bicarbonate or carbonic acid species. Poor iron retention was achieved in this
25 column, while only 3% and 14% of Cr(III) and Ni(II) fed, respectively, was retained. However,
26 metals retention increased in the multi-metals experiments to 3.6%, 6.9% and 14.1% for Fe, Cr
27 and Ni, respectively. This could be caused by the high metals concentrations that could have
28 decreased the metal-citrate stability complex, and also due to metals co-precipitation. The strong
29 stability of citrate-metal complexes, even when the pH was neutralized, might have affected
30 metals recovery. According to chemical speciation analysis obtained in previous assays,⁹ the
31 $[\text{Fe(II)-citrate}]^-$ complex is maintained at alkaline pH, while the concentration of the $[\text{Fe(III)-}$
32 $\text{citrate}]$ complex decreased. The same pattern occurred for the complexes $[\text{Ni(II)-citrate}_2]^{4-}$ and
33 $[\text{Cr-citrate}_2]^{4-}$. Iron-bearing minerals were difficult to identify by XRD, while Cr was found as
34
35
36
37
38
39
40
41
42
43
44
45
46
47
48
49
50
51
52
53
54
55
56
57
58
59
60

1
2
3 Cr(OH)₃·3H₂O and chromium oxides, such as CrO₂ and Cr₂O₃. Ni was recovered as NiCO₃ and
4
5 Ni₃(PO₄)₂ (Fig. S6 in SM). Thus, acidic metallurgic effluents can be neutralized with denitrifying
6
7 by-products promoting precipitation and recovery of metals; however, the stability of metals-
8
9 citrate complexes challenges metals recovery efficiency.

10
11
12
13 *Recovery in the ASFMBR.* Metals bio-recovery from complexed species was accomplished after
14
15 destroying ligands and forming insoluble compounds, which depended on metals-complexes
16
17 stability. Citrate degradation conducted by denitrifying microorganisms in the ASFMBR released
18
19 metals promoting their precipitation with denitrification by-products. The pH was maintained
20
21 above pH 8 in the ASFMBR during the whole operational period with synthetic wastewater (Fig.
22
23 S5). Iron was almost completely precipitated during the experiments with this metal.
24
25 Nevertheless, its precipitation decreased 24.9% for the tests assessing the effects of the three
26
27 metals together (Fig. 4). Individual addition of iron resulted in precipitation and/or oxidation of
28
29 Fe(II), as previously discussed in Section 3.1.1. Citrate degradation together with Fe(II) oxidation
30
31 triggered iron precipitation in the individual metal addition tests. However, for experiments
32
33 conducted with the three metals together, residual Fe(II) was obtained in the reactor (Fig. 4(a)).
34
35 Thus, as mentioned in Section 3.1.4, Fe(II) oxidation and its subsequent precipitation could be
36
37 affected by the presence of the other metals studied (Cr and Ni). Another explanation is that the
38
39 three metals added competed for the denitrifying by-products available to become precipitated.
40
41 Thus, the stability of the Fe(II)-citrate complex was less affected so that Fe(II) was maintained in
42
43 solution. FeCO₃ was detected during the individual addition of Fe, and additional iron-bearing
44
45 minerals were recovered during the multi-metals experiments, such as Fe₃O₄, hematite and
46
47 ferrihydrite. Thus, Fe(II) could have been oxidized followed by its subsequent precipitation in
48
49
50
51
52
53
54
55
56
57
58
59
60

1
2
3 these minerals. Regarding Cr(III) and Ni(II), their retention occurred at the same level both in
4 individual and multi-metals experiments. Cr(III) was poorly removed ($\leq 50\%$) because hydroxides
5 produced from denitrification would have been incorporated into the structure of Cr(III)-bearing
6 complexes, which are difficult to precipitate.²⁹ This limited Cr(III) bio-recovery and led to a large
7 amount of residual Cr(III) in the outlet. Cr(III) could be recovered as $\text{Cr}(\text{OH})_3 \cdot 3\text{H}_2\text{O}$ as evidenced
8 by XRD analysis (Fig. S7 in SM) during Cr(III) individual supply, while it was recovered as CrOOH
9 when the three metals were jointly tested (Fig. S3). For experiments conducted with Ni(II), a
10 recovery of up to 90% of this metal was accomplished. The predominant species in solution of
11 Ni(II) at the pH of the reactor operation were $[\text{Ni-citrate}]^-$ ($\text{pK} \sim 5.19$)³⁸ and $[\text{Ni}(\text{citrate})_2]^{4-}$
12 ($\text{pK} \sim 2.1$).³⁹ In previous batch experiments, Ni(II) was complexed and maintained in solution.⁹ The
13 higher Ni(II) bio-recovery achieved in the present work in comparison with the batch assays could
14 be caused by the higher dilution and alkalinity present in the reactor that saturated the insoluble
15 Ni species and promoted their precipitation. In the present work, Ni was recovered as $\text{Ni}_3(\text{PO})_2$
16 and NiCO_3 in individual studies (Fig. S7 in SM), while it precipitated as $\text{Ni}(\text{OH})_2$ when the three
17 metals were simultaneously added to the ASFMBR (Fig. S3 in SM). Additionally, microorganisms
18 can reduce Ni(II) to Ni(0) under denitrifying conditions.⁴⁰ During the operational tests, the redox
19 potential was maintained at values of up to -0.17 V (Fig. S8 in SM), which could have promoted
20 the reduction of Ni(II) to Ni(0). However, Ni(0) could not be detected by XRD analysis.

21
22
23
24
25
26
27
28
29
30
31
32
33
34
35
36
37
38
39
40
41
42
43
44
45
46
47
48 A fraction of metals precipitated on GC particles circulating at the conical and cylindrical-traps
49 sections of the ASFMBR (Table S1 in SM), which could be promoted by the activity of denitrifying
50 microorganisms. VSS content in GC particles circulating in the upper part of the reactor was
51 higher than that found in solids circulating in the conical section of the ASFMBR (Fig. S9 in SM).

1
2
3 Likewise, metals concentration on GC particles collected from the cylindrical-traps section was
4
5 higher than in solids circulating at the conical part of the reactor. The hydrodynamic conditions
6
7 of the reactor could have driven the higher metals concentration obtained in the upper part of
8
9 the reactor by sending the lower particles sizes to this zone. However, it is also interesting to
10
11 note metals deposition on GC particles circulating in the conical section of the ASFMBR. This zone
12
13 of the reactor showed a high flow velocity, thus the contact time between the flow dragging
14
15 (containing metals and denitrifying by-products) with GC particles is low. On the other hand, the
16
17 amount of heavy metals precipitated on GC particles agreed with the amount of metals
18
19 precipitated in the ASFMBR, which is related to the heavy metal-citrate complex stability,
20
21 following the trend Fe>Ni>Cr. For the multi-metals experiments, minerals recovery was generally
22
23 lower than the individual experiments.
24
25
26
27
28
29

30
31 *Real wastewater tests.* Precipitation column showed the capacity to retain significant amounts
32
33 of Fe, Cr, Ni, Sn, Mn, Mo, Co, Pb, Cu and V for experiments performed with both carbon sources
34
35 during the treatment of real stainless-steel industry wastewater (Fig. 4). However, B, Al, Ca and
36
37 Mg were poorly recovered here. Additional elements were obtained during the operation with
38
39 ethanol, such as Si and Na, while Mo was completely recovered. The higher metal removal
40
41 achieved with ethanol as compared to citrate was probably due to the absence of metals-
42
43 complexes formation, which allowed high metals precipitation. For both carbon sources, less
44
45 than 40% of metals present in the industrial effluent was retained in the precipitation column.
46
47
48 The acidic feed was neutralized in this column after a few days of operation. Nevertheless, the
49
50 pH was drastically decreased to values around 3 and 2 for ethanol and citrate experiments,
51
52
53 respectively. This may be explained by high metals precipitation occurring and deficient
54
55
56
57
58
59
60

1
2
3 recirculation of the alkalinity from the ASFMBR to the column. However, a higher amount of
4
5 metals was retained in the column during the treatment of real wastewater as compared to
6
7 experiments performed with synthetic medium. This could be explained by the higher HRT
8
9 applied during the treatment of real wastewater, which allowed saturation and precipitation of
10
11 a larger amount of insoluble species. Thus, further work should be conducted to optimize the
12
13 precipitation column to increase metals recovery.
14
15
16
17

18
19 Some studies have reported that citrate and heavy metals can be jointly precipitated both at
20
21 acidic and alkaline pH values.⁴¹⁻⁴³ Nevertheless, crystalline solids were observed with both
22
23 electron donors under acidic pH (prior the precipitation column), while citrate was not detected
24
25 by XRD analysis. Minerals detected by XRD under acidic pH included $\text{Cr}(\text{OH})_3 \cdot 3\text{H}_2\text{O}$, $\text{Fe}(0)$, $\text{K}(\text{OH})$
26
27 and $\text{Ni}(\text{OH})_2$ for both electron donors tested (Fig. S10 in SM). Additional picks related to
28
29 phosphates of Fe, Cu and Ni were also detected by XRD for the ethanol test. The same solids
30
31 obtained under acidic pH were settled in the precipitation column for the citric acid test (Fig. S11
32
33 in SM). Additional species were recovered for the ethanol experiment, such as lepidocrocite (γ -
34
35 FeOOH), which could be formed by the oxidation of green rust.³⁴ Other precipitated minerals
36
37 included Fe_3O_4 , ferrihydrite, $\text{Fe}(0)$, $\text{Ni}(0)$, CrO_2 and Cr_2O_3 (Fig. S11 in SM).
38
39
40
41
42

43
44 *Recovery in the ASFMBR.* The pH in the ASFMBR gradually decreased from 9 to 7.5 for
45
46 experiments with citrate, while it remained above 8 with ethanol; although pH dropped to 5.5
47
48 for the last days of operation with the latter substrate (Fig. S5 in SM). The better control of pH
49
50 achieved with citrate (Eq. 4) could be due to higher alkalinity produced as compared with ethanol
51
52 (Eq. 5). pH decrease could be related to the amount of metals forming species with denitrifying
53
54 by-products. All elements were removed (>90%) in the ASFMBR with both electron donors,
55
56
57
58
59
60

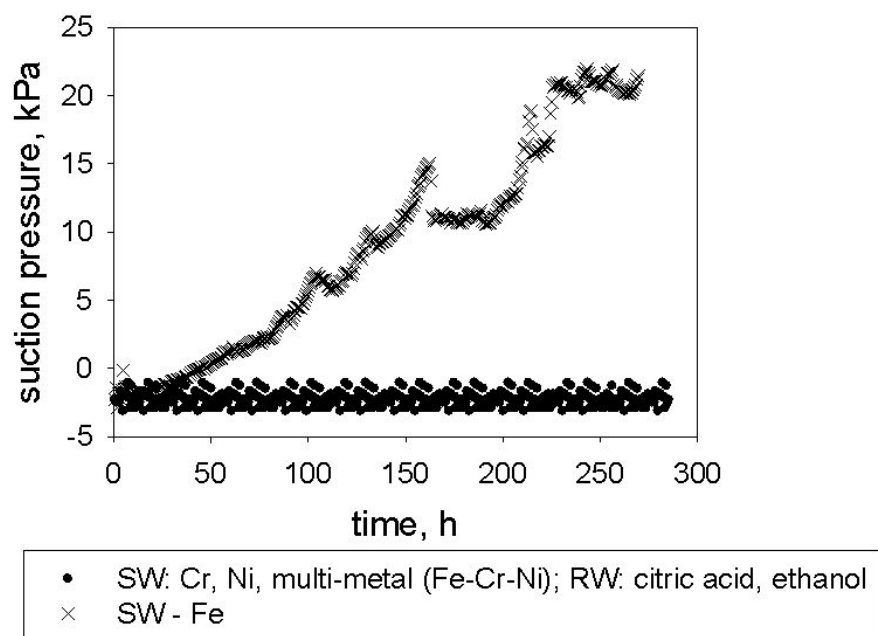
1
2
3 except for Na and Ca with a retention <80%, and Mg with precipitation <30%. For the remaining
4
5 elements, the amount of metals retained in the reactor for citrate tests ($\geq 90\%$) was lower than
6
7 that obtained in ethanol experiments ($\geq 99\%$) (Fig. 4). Ethanol can be considered as a suitable
8
9 electron donor to achieve denitrification, but the pH can also decreased affecting the process,
10
11 which is also reflected in deficient alkalinity production, thus affecting metal precipitation. On
12
13 the other hand, citrate maintains an adequate pH, but the produced metals-citrate complexes
14
15 are difficult to be removed. Ethanol does not form any complex with the metals, but a low
16
17 fraction of Ni, Mn, Si B and Co crossed the permeate line, and thus were detected in the effluent.
18
19 The main minerals recovered in the ASFMBR during its operation with ethanol were $\text{Fe}(\text{OH})_2$,
20
21 akageneite ($\beta\text{-FeOOH}$), Fe_3O_4 , CrOOH , $\text{Ni}(\text{OH})_2$, NiCO_3 and possible co-precipitation as $\text{Cr}_2\text{O}_3\text{NiO}$,
22
23 Cr_2FeO_4 and Cr_2O_3 (Fig. S4 in SM). For experiments performed with citric acid, it was difficult to
24
25 identify the precipitated species.
26
27
28
29
30
31
32

33 Similar to the results obtained with synthetic wastewater, the amount of elements precipitated
34
35 on GC particles circulating at the superior traps of the reactor was higher than on those prevailing
36
37 in the conical section, except for Si. The formation of metals-citrate complexes decreases metal
38
39 precipitation on GC particles, which can be observed with the higher concentration of metals for
40
41 ethanol experiments (Table S1 in SM). The amount of metals precipitated on GC particles showed
42
43 the following trend $\text{Fe} > \text{Si} > \text{K} > \text{Cr} > \text{Ni} > \text{P} > \text{Ca} > \text{Mn}$ for elements with ≥ 0.1 mg/g-GC. Interestingly, Si
44
45 was present at high concentration on GC particles and characterized as SiO_2 by XRD analysis (Fig.
46
47 S12 in SM). However, it was hardly found in other solids analyzed. Dai and Hu⁴⁴ reported that a
48
49 surface of quartz particles can be affected by the presence of ions, such as Cr(III), which change
50
51 their charge, consequently inhibiting the precipitation of iron hydroxide on quartz. However,
52
53
54
55
56
57
58
59
60

1
2
3 further investigation must be performed to clarify these aspects. Additional elements, such as
4
5 Mn, Al, Mg, Mo, Zn, Co, Na, V, Cu, Li, Pb and Sn were detected at trace concentrations.
6
7
8 Precipitation of metals in a FBR under denitrifying and sulfate-reducing conditions has also been
9
10 reported using GAC as supporting material for biomass, obtaining the precipitation of Ni, Fe, Ca,
11
12 Mg, Mn, S and P, being Ni the principal metal of study.¹⁸
13
14
15

16 **3.4. Filtration performance in the ASFMBR.** Degradation of citrate and ethanol through
17
18 denitrification implies the production of SMP linked to microbial growth, cells decay and lysis.
19
20 Additionally, SMP production could also be associated to protection of microorganisms against
21
22 toxic effects of some metals.³¹ This could contribute to the organic-inorganic membrane fouling
23
24 by metal deposition.²¹ Besides, metal precipitation with by-products or dissolved organic matter
25
26 increases the content of TSS, which can also contribute to membrane fouling. During the reactor
27
28 operation, SMPp gradually increased for the tests with individual Cr(III) addition and with the
29
30 supply of the three metals together. For experiments run with iron addition, SMPp concentration
31
32 decreased, while the opposite happened during Ni(II) addition (Fig. S2 in SM). Despite this
33
34 considerable increase, the suction pressure of the permeate line remained unaltered (Fig. 5).
35
36 Nevertheless, a report indicates a link between SMP and Fe(III)/Fe(II)⁴⁵ and the co-precipitation
37
38 between SMP and Fe(III).⁴⁶ This co-precipitation could prevent membrane fouling. The addition
39
40 of the three metals together resulted in a gradual and slow increase on the SMPp in the reactor.
41
42
43
44
45
46
47
48
49
50
51
52
53
54
55
56
57
58
59
60
The negative effect of Ni(II) on high SMPp production could have been decreased by the positive
effect of iron on SMPp production. An important decrease on SMPp was observed during the
treatment of real metallurgic wastewater, perhaps due to the high Fe concentration fed, which
precipitated with proteins. This might have had an effect on the production of SMPp.

1
2
3 Despite the decrease observed on SMPp with the addition of iron, an increase in the suction
4 pressure was detected during this experiment (Fig. 5), indicating some membrane fouling.
5
6 pressure was detected during this experiment (Fig. 5), indicating some membrane fouling.
7
8 According to the SMPc concentration in the reactor (Fig. S2 in SM), addition of metals resulted in
9
10 a gradual increase, except for the iron tests, where a high production of SMPc was obtained.
11
12 Likewise, the TSS concentration was higher with iron addition than with the other metals, which
13
14 may be related to the high iron precipitation obtained (Fig. 6). Therefore, membrane fouling
15
16 may be related to the high iron precipitation obtained (Fig. 6). Therefore, membrane fouling
17
18 could be explained by the higher SMPc and TSS concentrations reached in the ASFMBR. The
19
20 higher attribution of SMPc with respect to SMPp on membrane fouling has previously been
21
22 reported³⁰ and the insertion of heavy metals resulted in an increase on SMP, concomitant to
23
24 membrane fouling, which was attributed to the attachment of SMPc to the membrane surface
25
26 during the treatment of domestic wastewater.²¹
27
28
29
30
31



32
33
34
35
36
37
38
39
40
41
42
43
44
45
46
47
48
49
50
51
52
53
54 **Figure 5.** Suction pressure at the permeate line during the treatment of synthetic and real
55 wastewater. SW and RW mean synthetic and real wastewater, respectively.
56
57

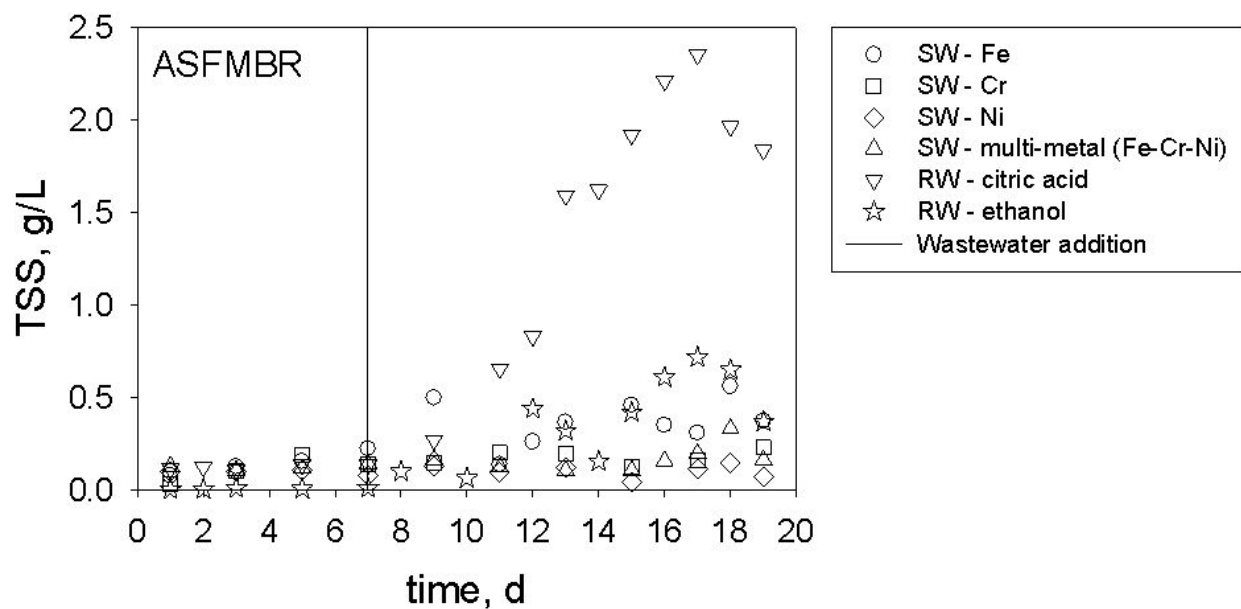


Figure 6. Total suspended solids (TSS) during the treatment of synthetic and real wastewater in the ASFMBR.

Metal precipitation could have also caused membrane fouling. Concentrations of Cr and Ni on the membranes were low for the experiments with citric acid (Fig. 7). This happened even at the higher metal rejection obtained with real wastewater compared with synthetic experiments. Meanwhile, for Fe-addition experiments, the Fe concentration on membranes was in agreement with the concentration of Fe added. A previous hydrodynamic study of the reactor revealed that higher shear stress and particle momentum was obtained at the lower part of the reactor (data not shown). Low shear stress and particle momentum on the membrane are related to higher SMP deposition. Similar metals concentration on the membrane was observed for the experiments with synthetic wastewater. Metals concentration on the membrane increased with the height of the reactor where the shear stress and particle momentum are low, excepting for

Fe experiments. However, lower amount of metals was detected at the highest part of the reactor. This could be explained because, at this height of the reactor, the adherence of SMP was higher due to deficient GC particles fluidization and low shear stress obtained in this zone of the reactor. SMP covered membrane surface, thus avoiding metals deposition thereafter. The presence of heavy metals, such as Zn(II), Cu(II), Pb(II) and Cd(II), in cake layer has been reported in MBR.²¹ Another aspect is that, due to the accumulation of SMP on the membrane at the upper part of the reactor, porous were covered and thus it is expected that filtration was mainly carried out in membranes located in the lower part of the ASFMBR, where low concentration of SMP were found.

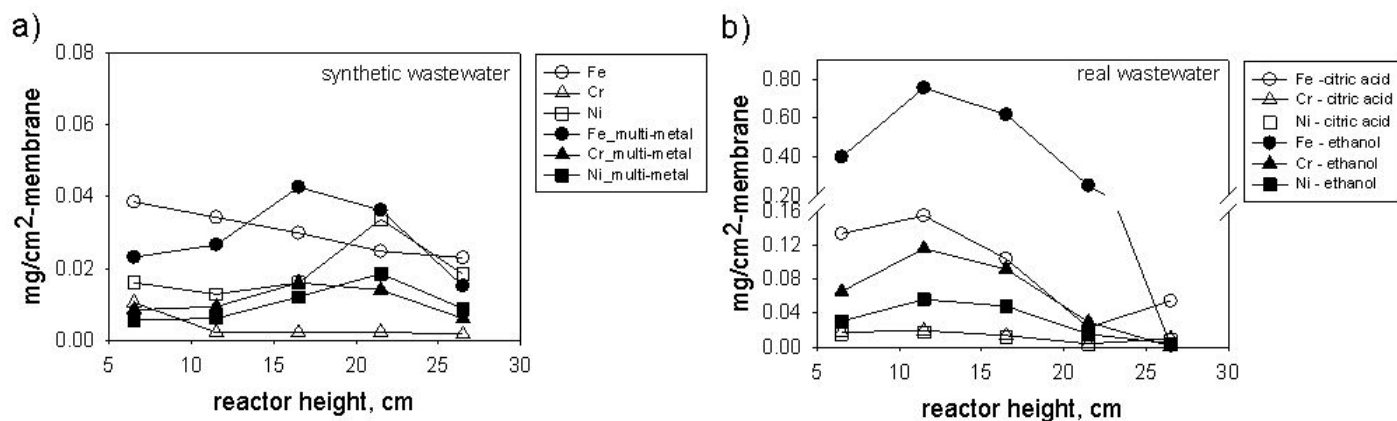


Figure 7. Principal metals on membrane surface at different heights of the reactor during the treatment of (a) synthetic and (b) real wastewater.

The high HRT applied during the treatment of real wastewater promoted large solids precipitation and, as a consequence, high metals rejection by the membrane. The Fe concentration on the membrane for the citrate experiments was higher than that obtained in

1
2
3 synthetic tests. However, the concentration greatly increased to 0.76 mg/cm²-membrane for the
4
5 experiment with ethanol. Therefore, the Fe-citrate complex moved the iron through the
6
7 membrane and decreased its precipitation thereafter, obtaining iron in the permeate line.
8
9
10 Despite the high precipitation of metals, especially Fe, on the membrane during the treatment
11
12 of real wastewater, suction pressure remained unaltered (Fig. 5). A remarkable difference in
13
14 concentration among the metals studied occurred at different reactor heights (Fig. 7). The lowest
15
16 concentrations were detected in the upper part of the reactor, which could be related to the high
17
18 amount of SMP deposited on this zone of the ASFMBR preventing metals deposition on the
19
20 membrane. The concentration of TSS in the reactor was lower when ethanol was supplied as
21
22 electron donor than that produced with citrate. This could be explained by the high metals
23
24 concentration maintained in solution due to the metals-citrate complexes formed, which avoided
25
26 metals precipitation. These solids are suspended and rejected by the membrane, which can be
27
28 observed by the amount of TSS measured in the permeate line, reaching values ≤ 0.10 g/L for all
29
30 the experiments.
31
32
33
34
35
36
37

38 The swirling fluidization of GC particles can decrease cake layer growth on the membrane
39
40 surface; however, internal fouling of the membrane can occur. The presence of iron in MBR has
41
42 resulted in amorphous ferric oxyhydroxides particles and gelatinous assemblages containing
43
44 Fe(III) bound to polysaccharides responsible for irreversible membrane fouling.⁴⁷ For the present
45
46 study, difference iron-bearing minerals were identified during the operation of the ASFMBR.
47
48 Siderite (green color) was deposited in different zones of the reactor during the operation with
49
50 iron, while additional iron-containing solids (brown color, characteristic for ferric oxides and
51
52 hydroxides) were also detected in the remaining experiments. This was confirmed by XRD
53
54
55
56
57
58
59
60

1
2
3 analysis. Similar colored minerals were observed on the membranes at the end of the
4
5 experimentation. Siderite precipitation could have caused membrane fouling in experiments
6
7 performed with iron, while deposition of iron oxides and hydroxides in the other experiments
8
9 could have occurred without affecting membrane filtration. Thus, the prevalence of different iron
10
11 minerals may affect the half-life of the membrane.
12
13
14
15
16
17
18

19 **4. CONCLUSIONS**

20
21
22 The ASFMBR introduced in the present study showed high nitrate removal efficiency during the
23
24 treatment of synthetic and real metallurgic wastewater with negligible production of NO_2^- and
25
26 N_2O . The acidic pH was efficiently neutralized by high recirculation of denitrifying by-products.
27
28 This strategy also allowed precipitation and recovery of a large amount of metals present in the
29
30 metallurgic effluent, although further studies should be conducted to optimize the recovery of
31
32 metals. The treatment concept is promising to achieve efficient removal of nitrate and recovery
33
34 of metals, while preserving the membrane module by the hydrodynamic conditions prevailing
35
36 inside the ASFMBR.
37
38
39
40
41

42 **ASSOCIATED CONTENT**

43 44 45 Supporting Information

46
47
48 The Supporting Information is available free of charge on the ACS Publications website at:

49
50
51
52 Details about experimental conditions, recovery and characterization of minerals, as well
53
54 as performance of the ASFMBR.
55
56
57
58
59
60

AUTHOR INFORMATION

Corresponding author

*E-mail: fcervantes@iingen.unam.mx. Tel.: (+52) 4421926169.

ORCID

Francisco J. Cervantes: 0000-0002-8382-1757.

Germán Buitrón: 0000-0003-3975-7644.

ACKNOWLEDGEMENTS

The authors thank the technical assistance of Alejandra Colunga, María del Carmen Rocha, Guillermo Vidriales, Juan Pablo Rodas and Beatriz Rivera. The authors acknowledge the use of infrastructure from the National Laboratories LINAN and LANBAMA at IPICYT. This study was financially supported by the Council of Science and Technology of Mexico (Grant 1289 from the Program Frontiers in Science) and by Universidad Nacional Autónoma de México (UNAM, Grant PAPIIT No. TA100120).

Conflict of Interest Disclosure

A patent application has recently been deposited in Mexico.

REFERENCES

- 1) Lin, H.; Gao, W.; Meng, F.; Liao, B.; Leung, K.; Zhao, L.; Chen, J.; Hong, H. Membrane Bioreactors for Industrial Wastewater Treatment : A Critical Review. *Crit. Rev. Env. Sci.*

- 1
2
3 *Tec.* **2012**, 42, 677-740.
4
5
6 2) EPA. *Office of Water and Office of Research and Development*. National Rivers and
7
8 Streams Assessment 2008-2009: A Collaborative Survey. 2016; EPA/841/R-16/007.
9
10 3) Appenroth, K.-J.; What are “heavy metals” in Plant Sciences? *Acta Physiol. Plant* **2010**,
11
12 32, 615–619.
13
14 4) Kumar, A.; Singh, N.; Pandey, R.; Gupta, V.K.; Sharma, B. Biochemical and Molecular
15
16 Targets of Heavy Metals and Their Actions; Rai, M.; Ingle, A. P.; Medici, S., Eds.; in
17
18 Biomedical Applications of Metals. Springer International Publishing AG, 2018.
19
20 5) Cervantes, F. J. *Environmental Technologies to Treat Nitrogen Pollution: Principles and*
21
22 *Engineering*. IWA Publishing, London, 2009; p. 420.
23
24 6) Zumft, W.G. Cell Biology and Molecular Basis of Denitrification. *Microbiol. Mol. Biol. Rev.*
25
26 **1997**, 61, 533–616.
27
28 7) Gikas, P. Single and combined effects of nickel (Ni(II)) and cobalt (Co(II)) ions on
29
30 activated sludge and on other aerobic microorganisms : A review. *J. Hazard. Mater.*
31
32 **2008**, 159, 187–203.
33
34 8) Papirio, S.; Ylinen, A.; Zou, G.; Peltola, M.; Esposito, G.; Puhakka, J. A. Fluidized-bed
35
36 denitrification for mine waters. Part I: Low pH and temperature operation.
37
38 *Biodegradation* **2014**, 25, 425–435.
39
40 9) Ramírez, J. E.; Rangel-Mendez, J. R.; Lopes, L.; Gomes, S. D.; Buitrón, G.; Cervantes, F. J.
41
42 Denitrification of metallurgic wastewater : mechanisms of inhibition by Fe , Cr and Ni. *J.*
43
44 *Chem. Technol. Biotechnol.* **2017**, 93, 440–449.
45
46 10) Wu, G.; Zhai, X.; Jiang, C.; Guan, Y. Denitrifying kinetics and nitrous oxide emission under
47
48
49
50
51
52
53
54
55
56
57
58
59
60

- 1
2
3 different copper concentrations. *Water Sci. Technol.* **2014**, *69*, 746–54.
4
5
6 11) Zou, G.; Ylinen, A.; Di Capua, F.; Papirio, S.; Lakaniemi, A.M.; Puhakka, J. Impact of Heavy
7
8 Metals on Denitrification of Simulated Mining Wastewaters. *Adv. Mater. Res.* **2013**, *825*,
9
10 500–503.
11
12
13 12) Zou, G.; Papirio, S.; Ylinen, A.; Di Capua, F.; Lakaniemi, A. M.; Puhakka, J. A. Fluidized-bed
14
15 denitrification for mine waters. Part II: Effects of Ni and Co. *Biodegradation* **2014**, *25*,
16
17 417–423.
18
19
20 13) Solomon, S.; Qin, D.; Manning, M.; Chen, Z.; Marquis, M.; Averyt, K. B.; Tignor, M.;
21
22 Miller, H. L. *Climate Change 2007: The Physical Science Basis, Contribution of Working*
23
24 *Group I to the Fourth Assessment Report of the Intergovernmental Panel on Climate*
25
26 *Change*, in: IPCC. Cambridge University Press, Cambridge, United Kingdom and New
27
28 York, NY, USA, 2007; p. 996.
29
30
31
32 14) Pan, Y.; Ye, L.; Ni, B.-J.; Yuan, Z. Effect of pH on N₂O reduction and accumulation during
33
34 denitrification by methanol utilizing denitrifiers. *Water Res.* **2012**, *46*, 4832–4840.
35
36
37 15) Jadhav, U. U.; Hocheng, H. A review of recovery of metals from industrial waste. *J.*
38
39 *Achiev. Mater. Manuf. Eng.* **2012**, *54*, 159–167.
40
41
42 16) Katsou, E.; Malamis, S.; Loizidou, M. Performance of a membrane bioreactor used for
43
44 the treatment of wastewater contaminated with heavy metals. *Bioresour. Technol.*
45
46 **2011**, *102*, 4325–4332.
47
48
49 17) Ahoranta, S. H.; Kokko, M. E.; Papirio, S.; Özkaya, B.; Puhakka, J. A. Arsenic removal from
50
51 acidic solutions with biogenic ferric precipitates. *J. Hazard. Mater.* **2016**, *306*, 124–132.
52
53
54 18) Zou, G.; Papirio, S.; Van Hullebusch, E. D.; Puhakka, J. A. Fluidized-bed. denitrification of
55
56
57
58
59
60

- 1
2
3 mining water tolerates high nickel concentrations. *Bioresour. Technol.* **2015**, *179*, 284–
4
5
6 290.
- 7
8 19) Liao, B.-Q.; Kraemer, J. T.; Bagley, D. M. Anaerobic Membrane Bioreactors: Applications
9
10 and Research Directions. *Crit. Rev. Env. Sci. Tec.* **2006**, *36*, 489–530.
- 11
12
13 20) Arévalo, J.; Ruiz, L. M.; Pérez, J.; Moreno, B.; Gómez, M. A. Removal performance of
14
15 heavy metals in MBR systems and their influence in water reuse. *Water Sci. Technol.*
16
17
18 **2013**, *67*, 894–901.
- 19
20 21) Feng, B.; Fang, Z.; Hou, J.; Ma, X.; Huang, Y.; Huang, L. Effects of heavy metal wastewater
21
22 on the anoxic/aerobic-membrane bioreactor bioprocess and membrane fouling.
23
24
25 *Bioresour. Technol.* **2013**, *142*, 32–38.
- 26
27
28 22) APHA. *Standard Methods for the Examination of Water and Wastewater*, 20th Edition.
29
30 APHA American Public Health Association, 1998.
- 31
32
33 23) Bradford, M. M. A rapid and sensitive method for the quantitation of microgram
34
35 quantities of protein utilizing the principle of protein-dye binding. *Anal. Biochem.* **1976**,
36
37
38 *72*, 248–254.
- 39
40 24) Dubois, M.; Gilles, K. A.; Hamilton, J. K.; Rebers, P. A.; Smith, F. Colorimetric Method for
41
42 Determination of Sugars and Related Substances. *Anal. Chem.* **1956**, *28*, 350–356.
- 43
44
45 25) Stookey, L. L. Ferrozine-a new spectrophotometric reagent for iron. *Anal. Chem.* **1970**,
46
47
48 *42*, 779–781.
- 49
50 26) Francis, A. J.; Dodge, C. J. Influence of complex structure on the biodegradation of iron-
51
52 citrate complexes. *Appl. Environ. Microbiol.* **1993**, *59*, 109–113.
- 53
54
55 27) Kiskira, K.; Papirio, S.; Van Hullebusch, E. D.; Esposito, G. Fe (II)-mediated autotrophic
56
57
58
59
60

- 1
2
3 denitrification: A new bioprocess for iron bioprecipitation/biorecovery and
4
5 simultaneous treatment of nitrate-containing wastewaters. *Int. Biodeter. Biodegr.* **2017**,
6
7 *119*, 631–648.
8
9
- 10 28) Johnson, D. B.; Hallberg, K. B. Acid mine drainage remediation options: a review. *Sci.*
11
12 *Total Environ.* **2005**, *338*, 3–14.
13
14
- 15 29) Wang, D.; Ye, Y.; Liu, H.; Ma, H.; Zhang, W. Effect of alkaline precipitation on Cr species
16
17 of Cr(III)-bearing complexes typically used in the tannery industry. *Chemosphere* **2018**,
18
19 *193*, 42–49.
20
21
- 22 30) Li, C.; Yang, Y.; Ding, S.; Hou, L. Dynamics of biofouling development on the conditioned
23
24 membrane and its relationship with membrane performance. *J. Memb. Sci.* **2016**, *514*,
25
26 264–273.
27
28
- 29 31) Shi, Y.; Huang, J.; Zeng, G.; Gu, Y.; Chen, Y.; Hu, Y.; Tang, B.; Zhou, J.; Yang, Y.; Shi, L.
30
31 Exploiting extracellular polymeric substances (EPS) controlling strategies for
32
33 performance enhancement of biological wastewater treatments : An overview.
34
35 *Chemosphere* **2017**, *180*, 396–411.
36
37
- 38 32) Kuo, W.-C.; Parkin, G. F. Characterization of soluble microbial products from anaerobic
39
40 treatment by molecular weight distribution and nickel-chelating properties. *Water Res.*
41
42 **1996**, *30*, 915–922.
43
44
- 45 33) Kiskira, K.; Papirio, S.; Fourdrin, C.; Van Hullebusch, E. D.; Esposito, G. Effect of Cu , Ni
46
47 and Zn on Fe (II)-driven autotrophic denitrification. *J. Environ. Manag.* **2018**, *218*, 209–
48
49 219.
50
51
- 52 34) Cornell, R. M.; Schwertmann, U. Formation, in: *The Iron Oxides: Structure, Properties*,
53
54
55
56
57
58
59
60

1
2
3 *Reactions, Occurrences and Uses*. Schwertmann, R. M. C. (Ed.), WILEY-VCH Verlag GmbH
4 & Co., KGaA, Weinheim, 2003.

- 5
6
7
8 35) Cervantes, F.; Monroy, O; Gómez, J. Accumulation of intermediates in a denitrifying
9 process at different copper and high nitrate concentrations. *Biotechnol. Lett.* **1998**, *20*,
10 959-961.
11
12
13
14
15 36) Chen, H., Chen, Q.-Q., Jiang, X.-Y., Hu, H.-Y., Shi, M.-L., Jin, R.-C., 2016. Insight into the
16 short- and long-term effects of Cu(II) on denitrifying biogranules. *J. Haz. Mater.* 304,
17 448–456.
18
19
20
21
22 37) Fernández-Nava, Y.; Marañón, E.; Soons, J.; Castrillón, L. Denitrification of wastewater
23 containing high nitrate and calcium concentrations. *Bioresour. Technol.* **2008**, *99*, 7976–
24 7981.
25
26
27
28
29 38) Bastug, A. S.; Göktürk, S.; Sismanoglu, T. 1:1 Binary Complexes of Citric Acid with Some
30 Metal Ions: Stability and Thermodynamic Parameters. *Asian J. Chem.* **2008**, *20*, 1269–
31 1278.
32
33
34
35 39) Hedwig, G. R.; Liddle, J. R.; Reeves, R. D. Complex formation of nickel(II) ions with citric
36 acid in aqueous solution: A potentiometric and spectroscopic study. *Aust. J. Chem.* **1980**,
37 33, 1685–1693.
38
39
40
41 40) Zhan, G.; Li, D.; Zhang, L. Aerobic bioreduction of nickel (II) to elemental nickel with
42 concomitant biomineralization. *Environ. Biotechnol.* **2012**, *96*, 273–281.
43
44
45
46 41) Gyliene, O.; Salkauskas, M.; Juskenas, R. The Use of Organic Acids as Precipitants for
47 Metal Recovery from Galvanic Solutions. *J. Chem. Technol. Biotechnol.* **1997**, *70*, 111–
48 115.
49
50
51
52
53
54
55
56
57
58
59
60

- 1
2
3 42) Gyliene, O.; Aikaite, J.; Nivinskiene, O. Recycling of Ni(II)– citrate complexes using
4
5 precipitation in alkaline solutions. *J. Hazard. Mater.* **2004**, *109*, 105–111.
6
7
8 43) Gylienė, O.; Nivinskienė, O.; Pakštas, V. Use of Metallic Iron for Decontamination of
9
10 Solution Containing Ni(II)– Citrate. *Polish J. Environ. Stud.* **2007**, *16*, 397–402.
11
12
13 44) Dai, C.; Hu, Y. Fe(III) Hydroxide Nucleation and Growth on Quartz in the Presence of
14
15 Cu(II), Pb(II), and Cr(III): Metal Hydrolysis and Adsorption. *Environ. Sci. Technol.* **2015**,
16
17 *49*, 292–300.
18
19
20 45) Wang, X.-M.; Waite, T. D. Iron speciation and iron species transformation in activated
21
22 sludge membrane bioreactors. *Water Res.* **2010**, *44*, 3511–3521.
23
24
25 46) Ryall, R.; Fielding, J. The co-precipitation of ferric iron and protein and the reducing
26
27 capacity of serum as factors affecting the assay os serum iron. *Clin. Chim. Acta* **1970**, *28*,
28
29 193–202.
30
31
32 47) Zhang, Z.; Bligh, M. W.; Wang, Y.; Leslie, G. L.; Bustamante, H.; Waite, T. D. Cleaning
33
34 strategies for iron-fouled membranes from submerged membrane bioreactor treatment
35
36 of wastewaters. *J. Memb. Sci.* **2015**, *475*, 9–21.
37
38
39
40
41
42
43
44
45
46
47
48
49
50
51
52
53
54
55
56
57
58
59
60