







This is an open access article distributed under the terms of the [Creative Commons Attribution License \(CC BY 4.0\)](#), which permits unrestricted use, distribution, and reproduction in any medium, provided the original author and source are credited.

**How to Cite:**

Argentel-Martínez, L., Peñuelas-Rubio, O., Ponce, J. A. L., Arredondo, T., Garatuza-Payan, J. and Yopez, E. A. (2021). Correlation among vegetative and reproductive variables in wheat under a climate change simulation. *Bragantia*, 80, e4221. <https://doi.org/10.1590/1678-4499.20210067>

# Correlation among vegetative and reproductive variables in wheat under a climate change simulation

Leandris ArgenteL-Martínez<sup>1,\*</sup> , Ofelda Peñuelas-Rubio<sup>1</sup> , José Aurelio Leyva Ponce<sup>1</sup> , Tulio Arredondo<sup>2</sup> , Jaime Garatuza-Payan<sup>3</sup> , Enrico A. Yepez<sup>3</sup> 

1. Tecnológico Nacional de México – Instituto Tecnológico del Valle del Yaqui – Ingenierías – San Ignacio Río Muerto – Sonora, Mexico.
2. Instituto Potosino de Investigación Científica y Tecnológica – San Luis Potosí, Mexico.
3. Instituto Tecnológico de Sonora – Cd. Obregón – Sonora, México.

**Received:** Mar. 4, 2021 | **Accepted:** Jun. 7, 2021

**Section Editor:** Gabriel Constantino Blain

**\*Corresponding author:** oleinismora@gmail.com

**How to cite:** ArgenteL-Martínez, L., Peñuelas-Rubio, O., Ponce, J. A. L., Arredondo, T., Garatuza-Payan, J. and Yepez, E. A. (2021). Correlation among vegetative and reproductive variables in wheat under a climate change simulation. *Bragantia*, 80, e4221. <https://doi.org/10.1590/1678-4499.20210067>

**ABSTRACT:** Based on climate change scenarios predicted for northwestern Mexico, an experiment was carried out during the 2016–2017 and 2017–2018 crop cycles, under field conditions in wheat, in the Yaqui Valley, Sonora, Mexico. The assay consisted on canopy temperature increase by + 2 °C with respect to ambient temperature, using a temperature free-air controlled enhancement (T-FACE) system for temperature manipulation and control. This experiment aimed to determine the existing correlation among vegetative and reproductive variables that can result precise indicators of warming tolerance. A total of 30 variables divided into: morphological (6), physiological (7), biochemical (8) and agronomic (9) indicators were evaluated, using CIRNO C2008 cultivar as experimental model. For each variable, the response index, in a total of five repetition each year, was computed. Results indicated that, during the vegetative stages, the most precise variables for heat tolerance evaluation were: dry matter, vegetal vigor, water potential, nitrate reductase and transpiration indexes; while during the reproductive stage were: grain and biomass yield, spike mass and vain grain per spike indexes. There was a positive correlation among the most majority of vegetative and reproductive variables, being water and osmotic potential indexes those with the greatest contribution to biomass and grain yield. From the 30 evaluated variables, water and osmotic potential, transpiration, grain yield and field water use efficiency indexes were the most precise indicator of heat tolerance in CIRNO C2008 under canopy temperature increase in + 2 °C.

**Key words:** phenology, physiology, warming.

## INTRODUCTION

Heat stress has, nowadays, become one of the most important abiotic factors affecting agriculture worldwide (Asseng et al. 2015). Around 59% of the world agricultural area is affected by this type of stress, where, in most cases, heat intensity exceeds the tolerance indexes of traditional crop species (Kurepin et al. 2015).

In Mexico, the arid and semi-arid ecosystems cover 51% of the territory (Díaz-Padilla et al. 2011), where drought and salinity constitute the most common stresses. Additionally, the expected increases in global temperature impact these ecosystems (IPCC 2014). This factors combination exacerbates plants physiological and yield performance of several basic crops, such as wheat (ArgenteL-Martínez et al. 2019).

Warming is a common stress generally overlooked by producers (Rezaei et al. 2018); however, it modifies the initial development, vegetation index, water regime, transpiration rate, hormonal metabolism, photosynthesis-respiration balance, water use efficiency, protein synthesis, enzymatic activity (Thomason et al. 2018), time of phenophase occurrence (Garatuza-Payan et al. 2018) and, consequently, decreases grain and industrial yields (Yang et al. 2017). Asseng et al. (2015) reported that wheat will be one of the most affected crops by heat stress in

the next decade. However, current wheat crop production worldwide still demonstrates its capacity to grow and produce under different climates (Argente-Martínez et al. 2018). In the Yaqui Valley, Sonora, Mexico, more than 39% produce around 39% of the national wheat production every year. In this valley, a recent study of the initial response of wheat to experimental warming showed that phenology and grain yield decreased up to 30% due to heat stress (Garatuza-Payan et al. 2018).

The impact of heat stress in crops are generally, based on modeling and simulation, considering as a base the yield response variation for different years (through analysis of temperature variations). This approach is used because of the lengthy and time consuming that result the evaluation of indicators such as physiological and biochemical variables in field tests. Then, the evaluation of ecophysiological and agronomic variables, tested under field conditions, would contribute to understanding heat tolerance. Abiotic stress response should be explained under field conditions, where the broadest interaction genotype-environment can be observed. Although various studies of warming response of wheat have already been developed using some physiological or agronomic variables (Garatuza-Payan et al. 2018; Argente-Martínez et al. 2019), the general response has not been fully described through variables integration (Rezaei et al. 2018).

During plants exposition to heat stress, several morphological, physiological, biochemical and agronomical mechanisms are activated, but not all contribute to general or final heat tolerance (Argente-Martínez et al. 2018). For this reason, in order to provide more information about the tolerance degree of certain species to stressing conditions, it is important to analyze a large number of variables in both the vegetative and the reproductive stages and its correlation (Dettori et al. 2017). Therefore, this work aimed to evaluate the existing correlation among vegetative and reproductive variables in wheat in a climate change scenario based on temperature increase, under field conditions, in the crystalline wheat cultivar CIRNO C2008, and recommend variables as precise indicators of heat stress tolerance.

## METHODS

The experiment was carried out during the two growing seasons of 2016–2017 and 2017–2018, under field conditions at the Experimental Technology Transfer Center (CETT-910) of the Instituto Tecnológico de Sonora (ITSON), located in the Yaqui Valley at 27°22'0.4" N and 109°54'50.6" W (UTM: 607393.24 m east; 3027508.34 m north) at 46 m above sea level.

### Treatments and temperature control

The experiment consisted in raising crop canopy temperature by 2 °C, using the temperature free-air controlled enhancement (T-FACE) system proposed by Kimball (2015) and fully described by Garatuza-Payan et al. (2018). Two treatments were established to study the wheat response to increased temperature: increased canopy temperature aimed at 2 °C (T1: warming treatment) above ambient canopy temperature of adjacent plots (T2: control treatment). In both crop cycles, six equilateral triangular structures of 5.2 m of side were used (Fig. 1). Each structure was equipped with six thermal radiators per plot (FTE-1000 model, 1000 W, 240 V, 245 mm long × 60 mm wide, built by Mor Electric Company Heating Association Inc. Comstock Park, MI, USA). Two radiators were mounted in each triangle side, such that spatial distribution of radiators formed a regular hexagon that rose canopy temperature by 2 °C on 3 m diameter plots.

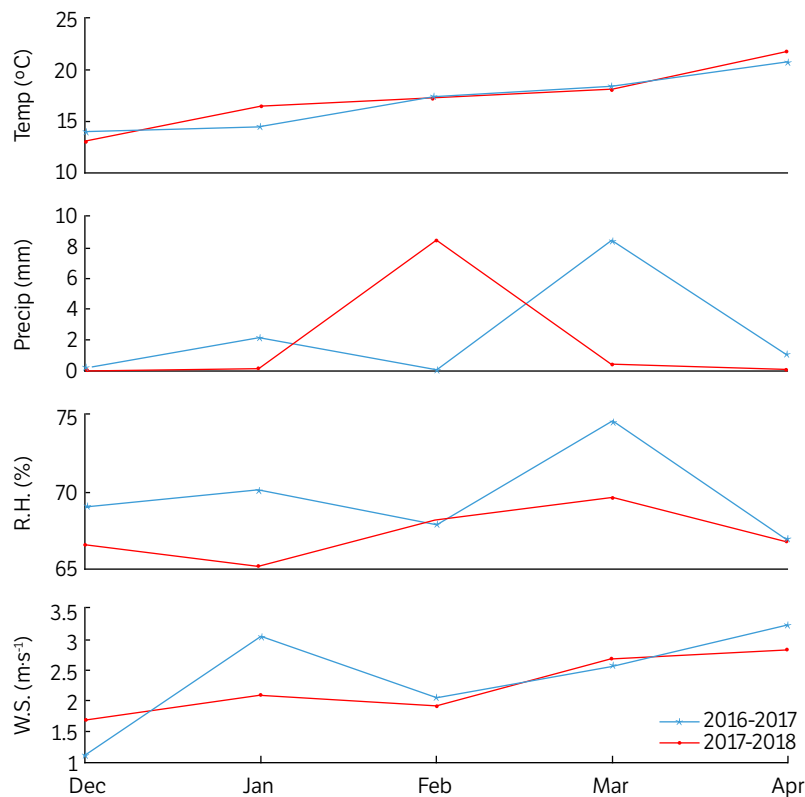
Temperature control was achieved with infrared temperature sensors (IRTS; Apogee Instruments, Inc., Logan, UT, USA) installed on both control and warmed plots with an inclination of 45° from the soil surface to cover an ellipsoid of  $r = 1.5$  m at the center of the plot. The IRTS signal was received in a datalogger (CR1000 Campbell Sci, Inc., Logan, UT, USA). The electronic system was programmed to keep a constant temperature of 2 °C in the warming treatments, through the proportional, integrative and derivative routine described in Kimball (2015), simulating the temperature increase predicted for this region for the year 2050, according to the IPCC (2014).



**Figure 1.** Aerial image of the experimental warming assay during the crop cycles 2016–2017 and 2017–2018.

### Climate variables behavior

In both experimental seasons, average temperatures remained between 8 and 24 °C. The lowest temperatures occurred during December and January. Monthly rainfall was less than 25 mm in both years and the largest precipitation record occurred in February for the 2016–2017 campaign, and in March for 2017–2018. The wind speed did not exceed 3 m·s<sup>-1</sup> in both years (Fig. 2), an aspect that caused considerable stability of the T-FACE system and the thermal control of the crop canopy.



**Figure 2.** Climate variables during 2016–2017 and 2017–2018 crop cycles.

Note. WS: wind speed; R.H: relative humidity; Precip: precipitation; Temp: temperature.

## Cultivar used as a model, seeding and culture attentions

CIRNO C2008 wheat cultivar was used in both crop cycles due to its genetic stability since 2008 (ArgenteL-Martínez et al. 2018), when was commercially released in southern Sonora (Figuroa-López et al. 2010). This cultivar is classified as crystalline or hard wheat (*Triticum durum* L.). It was originated from selection in segregating populations of SOOTY-9/RASCON-37//CAMAYO crossbreed, carried out at the International Center for Maize and Wheat Improvement (CIMMYT). The average height is about 78 cm with erect stems. Under irrigation, physiological maturity is reached at 122 days. Mean grain yield reaches 5.6 and 6.3 t·ha<sup>-1</sup>. Every year and average of 150 000 ha of this cultivar are sowed in the Yaqui Valley (Garatuza-Payan et al. 2018).

Seeding was carried after tillage (Table 1) in a vertisol soil (Bockheim et al. 2014), with a sowing machine (SUB-24) with three rows on the furrows using a seeding density of 170 kg·ha<sup>-1</sup>. The background fertilization includes standard doses of 250 kg·ha<sup>-1</sup> of urea + 100 kg·ha<sup>-1</sup> of monoammonium phosphate fertilizer (MAP), 11-52-00 in both crop cycles. During the first and second irrigations, which took place during growth and tillering phenophases, respectively, nitrogen fertilizer was applied at a dose of 50 kg·ha<sup>-1</sup> of urea. In the third irrigation (heading phenophase), there was no fertilizer application.

**Table 1.** Soil tillage during the two years of experimentation.

Activities	Depth (cm)	Date	
		2016	2017
Subsolation	45 – 50	14/10	6/10
Plowing	20 – 25	18/10	10/10
Double tillage	10 – 15	21/10	14/10
Terrain leveling	-	25/10	17/10
Furrowing	20	28/10	20/10

All irrigations were applied with an average water depth of 14 cm and irrigation intervals of about 25 days, when gravimetric water volume of the soil was at about 70%.

During the growing period the presence of foliage aphid (*Schizaphis graminum*) was detected, which was controlled with Muralla Max pesticide (a.i. imidacloprid + beta-cyfluthrin) at a dose of 0.20 L·ha<sup>-1</sup> on the periphery of the plot to 2–3 m from the border of the experimental area. A slight presence of broadleaf weeds was observed and they were controlled by manual weeding before applying irrigations.

## Evaluated variables

The evaluated variables were determined using the respective methodologies and are summarized in Table 2.

All variables were expressed as indexes related to the control, using the following equation (Eq. 1):

$$IV(\%) = \frac{VW}{VC} \times 100 \quad (1)$$

where VI represents the index of the variables, expressed in %; and VW and VC represent evaluated variables under warming and control plots, respectively.

The variables nomenclature was formed by the using of the word “index” after variable name: initial plant height index (PHI); root length index (RLI); fresh matter accumulation index (FMI); dry matter accumulation index (DMI); vegetal vigor index (VVI); water potential index (WPI); osmotic potential index (OPI); osmotic adjustment index (OAI); proline content index (PI); glycine betaine content index (GBI); reduced glutathione activity index (RGI); POD activity index (PODI); nitrate reductase activity index (NRI); glutamine synthetase activity index (GSI); protein content during flowering

index (TPCI); starch content during flowering index (TSCDFI); NDVI index (NDVII); photosynthesis index (PHOTOI); transpiration index (TRANI); leave water use efficiency index (LWUEI); phenology index (PHENI); spike length index (SPIKELI); spike mass index (SMASSI); full grain per spike index (FG/SI); vain grain per spike index (VG/SI); grain mass index (GMI); biomass yield index (BIOYI); grain yield (GYI); starch mobilization rate index (SMI) and field water use efficiency index (FWUEI).

**Table 2.** Response variables, units, acronyms, type of variable and method used for measurements.

Variables	Units	Acronyms	Type	Methodology
<b>Vegetative stages</b>				
Initial plant height	cm	PHI	Mor	Foroughbakhch-Pournavab et al. (2015)
Root length	cm	RLI	Mor	
Fresh matter accumulation	g	FMI	Mor	
Dry matter accumulation	mg·g·DM <sup>-1</sup>	DMI	Mor	
Vegetal Vigor	adimensional	VVI	Morp	
Water potential	MPa	WPI	Phy	Blum et al. (2017)
Osmotic potential	MPa	OPI	Phy	
Osmotic adjustment	MPa	OAI	Phy	Blum et al. (2017)
Proline content	µg·g·FM <sup>-1</sup>	PI	Bio	Bates et al. (1973)
Glycine betaine content	µg·g·FM <sup>-1</sup>	GBI	Bio	Grieve and Grattan (1983)
Reduced glutathione activity	µmol·g·FM <sup>-1</sup>	RGI	Bio	Xue et al. (2001)
POD activity	EAU·g·FW <sup>-1</sup> ·min <sup>-1</sup>	PODI	Bio	Martínez (2001)
Nitrate reductase activity	µmol NO <sub>2</sub> <sup>-</sup> ·g·FW <sup>-1</sup> ·min <sup>-1</sup> ·h <sup>-1</sup>	NRI	Bio	Jaworsky (1971)
Glutamine synthetase activity	µmol·GH·s <sup>-1</sup> ·g <sup>-1</sup> ·FW	GSI	Bio	Slawky and Rodier (1988)
Protein content during flowering	mg·g·DM <sup>-1</sup>	TPCI	Bio	Yoshida et al. (1971)
Starch content during flowering	mg·g·DM <sup>-1</sup>	TSCDFI	Bio	McCready et al. (1950)
NDVI	adimensional	NDVII	Phy	Inman et al. (2005)
Photosynthesis	µmol CO <sub>2</sub> ·m <sup>-2</sup> ·s <sup>-1</sup>	PHOTOI	Phy	Yang et al. (2016)
Transpiration	µmol H <sub>2</sub> O·m <sup>-2</sup> ·s <sup>-1</sup>	TRANI	Phy	
Leave water use efficiency	µmol CO <sub>2</sub> ·H <sub>2</sub> O·m <sup>-2</sup> ·s <sup>-1</sup>	LWUEI	Phy	Argentel-Martínez et al. (2018)
Phenology	days	PHENI	Mor	Zadocks et al. (1974)
<b>Reproductive stage</b>				
Spike length	cm	SPIKELI	Agro	Garatuza-Payan et al. (2018)
Spike mass	g	SMASSI	Agro	
Full grain per spike	unit	FG/SI	Agro	
Vain grain per spike	unit	VG/SI	Agro	
Grain mass	g	GMI	Agro	
Biomass yield	t·ha <sup>-1</sup>	BIOYI	Agro	
Grain Yield	t·ha <sup>-1</sup>	GYI	Agro	
Starch mobilization rate	%	SMI	Bio	Yang et al. (2002)
Field water use efficiency	m <sup>3</sup> H <sub>2</sub> O·t <sup>-1</sup> ·ha <sup>-1</sup>	FWUE	Agro	Jin et al. (2018)

Note. Mor = morphological; phy = physiological; bio = biochemical; agro = agronomical.

## Statistical processing

Data corresponding to response variables were used to form a 5 × 30 matrix, which were previously tested for normality and homoscedasticity (Svantesson and Wallace 2003). In order to determine variables with the greatest contribution to the

total variability response in each stage, as criteria for assessing heat tolerance, a principal components analysis (PCA) was carried out (Pearson 1901). In this analysis, variables were selected when the value of its unitary contribution was higher than 0.8 (80%) (Shabala and Munns 2017).

Based on variables with the greatest contribution to the total variability (unitary contribution > 0.85), an analysis of hierarchical conglomerates of complete linkage was done, based on a Euclidean distance matrix (Rohlf and Fisher 1968), to group variables. The average tolerance values of the computed indexes of each group and the distance values between groups were determined. The correlation matrix obtained through a canonical correlation analysis was accomplished (Mertler and Reinhart 2016). For the statistical processing, STATISTICA professional statistical package, version 8.4, was used (StatSoft, Tulsa, OK, USA).

## RESULTS AND DISCUSSION

Through the PCA, developed to the vegetative variables, it was found that among all evaluated variables, 69.93% of the total variability was accumulated in the first two components in the vegetative stages. The variables FMI, DMI, VVI, WPI, SPI, GBI, WPI, OPI, NRI, HSCI, NDVII and TRANI were the ones with greater contribution (46.21%) in the first component, while PHI, PHOTOI and LWUEI contributed with 23.72% to the second component (Table 3).

**Table 3.** Principal components analysis of the variables during the vegetative stages (marked loadings are > 0.7).

Variables	Components	
	1	2
PHI	-0.147532	-0.798777
RLI	-0.447731	0.631476
FMI	0.917772	0.357437
DMI	0.929419	0.280641
VVI	0.953872	0.168694
WPI	0.869861	-0.054318
OPI	0.960113	0.049827
OAI	0.155628	0.448907
PI	-0.006277	0.549976
GBI	0.858650	0.342389
RGI	0.860899	-0.329082
PODI	0.615439	-0.645297
NRI	0.756755	-0.162033
GSI	0.673860	-0.291595
TPCI	-0.152677	0.066192
TSCDFI	0.757495	-0.513911
NDVII	-0.764545	-0.52598
PHOTOI	0.193311	-0.920749
TRANI	0.865616	-0.322563
LWUEI	-0.409009	-0.902483
PHENI	-0.378921	-0.366832
Expl. var	9.704084	4.98043
Contribution	0.462099	0.237163
Total contribution percentage	69.93%	

The present study confirms the contribution of the initial development (FMI, DMI, VVI), the water regime (WPI, OPI) and the accumulation of osmotically active compounds (GBI and RGI) variables to the physiological performance of the plants. Such indicators have been reported as efficient variables for the heat response in wheat (Bharati et al. 2018; Dwivedi et al. 2018). These variables of water and osmotic regime allowed a significant contribution of transpiration (TRANI) and water use efficiency (LWUEI) to the total variability found during the vegetative stage. Special attention has been given to the accumulation of osmotically active compounds, mainly glycinebetaine and reduced glutathione, which represent a biochemical signal of abiotic stress in plants (El Sabagh et al. 2018).

On the other hand, the activity of some enzymes, such as nitrate reductase (NRI), contributes to the variability of the responses of the species in the initial stages and development, as well as in the present study. This result has shown that under heat conditions, the efficiency of nitrogen fertilizer assimilation is increased (Bala and Sikder 2018). Also, high nitrogen assimilation contributes to a grader photosynthetic activity due to the chlorophyll increase still under heat stress (Kocheva et al. 2020).

For the reproductive stage, SMASSI, BIOYI, SMI, GYI and FWUE showed the most contribution to the first component, contributing with 53.41% of the total variability. In the second component VG/SI was the only variable with a significant contribution, which contributed in a 23.8% to the total variability (Table 4).

**Table 4.** Principal components analysis of the variables during the reproductive stages (Marked loadings are > 0.70).

Variables	Components	
	1	2
SPIKELI	0.641452	-0.418583
SMASSI	0.899695	-0.194620
FG/SI	-0.239384	0.261225
VG/SI	-0.178851	0.848298
GMI	0.484230	0.784996
BIOYI	-0.925951	-0.184165
GYI	0.990337	-0.068262
SMI	-0.725711	-0.630377
FWUE	0.947117	-0.298447
Expl. var	4.806522	2.142178
Contribution	0.534058	0.238020
Total contribution percentage	77.20%	

## Correlation among variables during vegetative and reproductive stages

When the correlation among reproductive and vegetative stages variables were determined (Table 5), it was obtained that: SMASSI correlated negatively and significantly with FMI, DMI, VVI, WPI, and GBI. The variable VG/SI correlated negatively with GSI. The GMI variable correlated positively with RLI and negatively with TSCDFI and TRANI. The variable BIOYI correlated positively with VVI, OPI and negatively TRANI. The GYI correlated negatively with VVI, OPI, RGI and TRANI. The SMI correlated positively with WPI and with TSCDFI, and finally, FWUEI correlated positively with OPI.

The spikes mass (SMASSI) is one of the variables that most contribute to grain yield and is determined by the amount of filled grains (FG/SI). Both components are function of plant capacity to mobilize elaborated substances from the source (leaves and stem) to the sink (the grain) (Ram et al. 2018), which decreases as a result of heat effect because of water regime variability. In the present study, the spike mass of the (SMASSI) was affected by the variable water regime (WPI and OPI) and by the accumulation of osmotically active compound GBI. The synthesis of osmotically



active compounds involves the use of carbon skeletons or the degradation of macromolecules for their synthesis. Perhaps these organic compounds were degraded to form glycine betaine, whose main role in plants under stress condition is to increase osmotic pressure to reduce water potential and ensure transpiration (Argente-Martínez et al. 2019), perhaps for mesophyll cooling. Some variables of the vegetative stage contribute to grain quality and that the responses in yield components could be attributed to variations during the vegetative stage, where a high cellular dynamism take place (Yáñez et al. 2017).

**Table 5.** Correlations coefficient of variables during vegetative stage (first column) and reproductive stage (first row).

Variables	SPIKELI	SMASSI	FG/SI	VG/SI	GMI	BIOYI	GYI	SMI	FWUE
PHI	-0.19	0.48	-0.79	-0.37	-0.52	0.12	0.09	0.14	0.34
RLI	-0.20	0.13	0.27	0.60	0.92*	-0.51	0.26	-0.81	0.04
FMI	-0.10	-0.83*	0.58	-0.27	-0.09	0.63	-0.70	0.49	-0.70
DMI	-0.22	-0.83*	0.50	-0.24	-0.12	0.69	-0.76	0.49	-0.74
VVI	-0.21	-0.88*	0.30	-0.17	-0.25	0.84*	-0.83*	0.56	-0.78
WPI	-0.32	-0.83*	0.62	-0.10	-0.47	0.67	-0.79	0.83*	-0.79
OPI	-0.42	-0.95**	0.51	-0.01	-0.35	0.83*	-0.92**	0.71	-0.92*
OAI	0.23	-0.34	-0.15	0.24	0.26	0.28	-0.15	-0.21	-0.20
PI	0.53	0.21	0.47	-0.59	0.43	-0.46	0.40	-0.25	0.35
GBI	-0.12	-0.94**	0.45	0.05	-0.12	0.74	-0.77	0.49	-0.81
RGI	-0.52	-0.77	-0.07	-0.02	-0.59	1.00**	-0.93**	0.71	-0.80
PODI	-0.72	-0.46	-0.01	-0.05	-0.70	0.71	-0.75	0.75	-0.61
NRI	-0.21	-0.44	0.36	-0.57	-0.42	0.50	-0.54	0.65	-0.42
GSI	0.17	-0.24	0.05	-0.85*	-0.62	0.48	-0.33	0.70	-0.13
TPCI	-0.78	-0.08	-0.13	0.68	0.44	0.06	-0.24	-0.45	-0.31
TSCDFI	-0.18	-0.54	0.18	-0.38	-0.87*	0.70	-0.64	1.00**	-0.50
NDVII	0.16	0.78	-0.81	0.09	-0.15	-0.40	0.59	-0.33	0.69
PHOTOI	-0.51	-0.06	-0.64	0.04	-0.82*	0.59	-0.43	0.55	-0.22
TRANI	-0.52	-0.78	-0.06	-0.02	-0.59	1.00**	-0.93**	0.71	-0.80
LWUEI	-0.24	0.51	-0.73	0.05	-0.58	-0.03	0.17	0.16	0.33

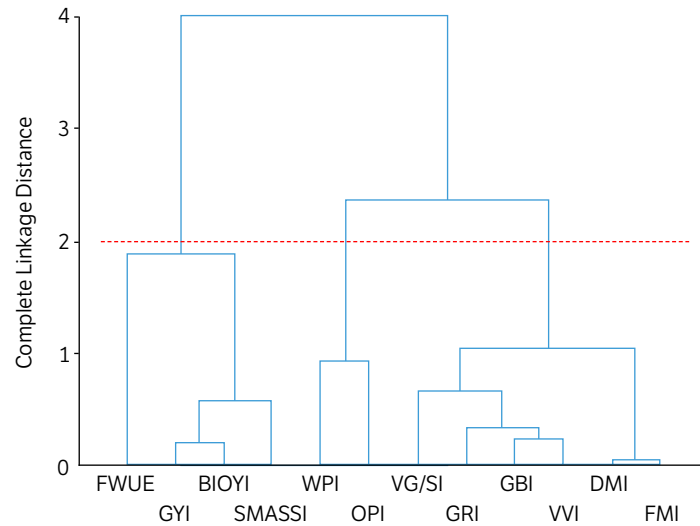
Marked correlations coefficient are significant (\*) at  $p < 0.05$  and highly significant (\*\*) for  $p < 0.05$ .

The same variables (VVI, OPI, GRI and TRANI) which correlated positively with the BIOYI, affected in the GYI, but negatively. For BIOYI, the plant vigor (VVI) from the imposition of heat had a positive effect, and the reductions of the osmotic potential (OPI) and the GRI content, as a promoter of the osmotic potential variation, contributed to maintain the sufficient transpiration that allow the normal development of the plants (BIOYI); however, these contributions were not enough to contribute to the grain yield (GYI).

Heat stress cause an increase in the quantity of vain grains, mainly those of the distal part of the spike (Chandra et al. 2017) causing a reduction of grain mass (SMASSI), as occurred in the present study.

## Clusters of indicators of heat variability response

Three groups were conformed from variables with the greatest contribution to the total variability (Fig. 3). Group 1 included FWUE, GYI, BIOYI and SMASSI, being the most efficient variables to evaluate warming response variability, based on its highest indices (Table 6), all of them belonging to agronomic indicators.



**Figure 3.** Cluster of indices of the variables of greatest contribution and correlation among vegetative and reproductive stages.

**Table 6.** Mean values of indexes of variables by group and distance values between groups.

Group	Indexes	Distances from respective cluster center	Distance among groups	
			1	2
I	FWUE	0.57		
	GYI	0.05		
	BIOYI	0.09		
	SMASSI	0.22		
II	WPI,	0.18	0.67	
	OPI	0.19		
III	VG/SI	0.16	1.35	0.69
	GBI	0.02		
	GRI	0.02		
	VVI	0.12		
	DMI	0.16		
	FMI	0.20		

The second group was formed by only two variables: WPI and OPI, both are physiological indicators evaluated during the vegetative stage. The third group clustered VG/SI (agronomical indicator from reproductive stage), GRI, GBI (biochemical indicators) and VVI, DMI, and FMI (morphological indicators), all of the variables evaluated during vegetative stage, which resulted in less accurate indicators to evaluate responses to heat stress in crystalline wheat. Ashraf and Foolad (2007) pointed out that among the osmoregulators synthesized by plants, glycine betaine (GB) and reduced glutathione (RGI) are a precise biochemical indicator in improving plant abiotic stress resistance.

When average values of Euclidian distance from the cluster center were calculated for the variables agglutinated in each group, it was found that yield components indexes (group 1) were those of lower values, demonstrating the existence of positive correlation among them. The GYI showed the minimum value of distance (Table 6).

The second group, formed by water regime variables, had an intermediate average value, while the third group presented the highest values, being the least accurate for the identification of heat response variability. Groups 1 and 2 are the most effective groups of variables for heat variability response of the evaluated cultivar due to their lower Euclidian distance.

Ever since decades ago, scientists have worked on the use of indicators as criteria for variability to heat response during genotype valuation (Elbashir et al. 2017). Many of these indicators are common to different types of stress, such as salinity, drought and heat. For heat stress in particular, grain yield, thousand grains weight, grain filling duration, number of effective full and vain grain per plant (Hunt et al. 2018) and biomass (Hütsch et al. 2018) are some of the most important yield components indicators of variability response to heat. In this work, GYI, BIOI and SMASSI were the variables with major contribution to agronomic variability. However, according to natural intra e interspecific plant response variability to abiotic stress, it is very important to monitor the available germplasm through morphological, physiological, biochemical and yield components indicators in order to elucidate the most precise indicators in some crops, including wheat (Thomason et al. 2018). In some cases, due to the costs of agronomic experimentation for abiotic stress under field conditions, an important alternative is the use of elite varieties that have maintained their productive genetic potential over the years, such as CIRNO C2008 (ArgenteL-Martínez et al. 2019). That is why it was used as experimental model in this work.

Generally, spike mass has been correlated with its size, however other researchers have rejected this correlation since the spike can grow according to its genetic potential but not to fill all of its grains, reducing in consequence its mass, and backwards (Garatuza-Payan et al. 2018).

Plant water relation variables have always been associated to stress due to drought and salinity (ArgenteL-Martínez et al. 2018). However, in this study, WPI and OPI were efficient indicators of heat response variability with respect to the control. Other physiological indicators have also been proposed for heat stress tolerance, such as photosynthetic rate index. However, in this study, a high average photosynthetic activity (PHOTOI) was not an accurate indicator, because it was associated with high transpiration (TRANI), creating significant variability in the efficiency of leaf water use (LWUEI) and field water use efficiency (FWUEI) (Hütsch et al. 2018).

The TSCI has shown association with yield in warm environments, denoting its association with heat stress tolerance (Allahverdiyev et al. 2018). The TSCI shows high correlation with yield and have been an efficient indicator for breeding for warming tolerance in wheat. Anyway, genotypes having cooler canopies shows greater grain filling and consequently maintain lower reduction of SMASSI (Fan et al. 2018).

## CONCLUSION

The variables of the initial growth (FMI, DMI, VVI), water regime (WPI, OPI) and osmotically active accumulation (GBI and RGI) were the ones of major contribution to the total variability of reproductive stage variables. Vegetative variables contributed in a 69% to the total variability found.

The variables SMASSI, GMI, BIOYI and GYI of the reproductive stage were the ones of major correlation with vegetative stages variables. Reproductive stage variable explained 77% of total variability.

The most precise variables for the warming response variability in the studied cultivar were: SMASSI, BIOYI and GYI, followed by water regime variables WPI, OPI and the osmotically active accumulation variables GRI and GBI.

## AUTHORS' CONTRIBUTION

**Conceptualization:** ArgenteL-Martínez L.; **Methodology:** Yepez E. A. and ArgenteL-Martínez L.; **Investigation:** Garatuza-Payan J. and Peñuelas-Rubio O.; **Writing – Original Draft:** ArgenteL-Martínez L.; **Writing – Review and Editing:** Yepez E. A. and Leyva P. A.; **Funding Acquisition:** Arredondo T., Garatuza-Payan J and ArgenteL-Martínez L.; **Resources:** Arredondo T., Garatuza-Payan J and ArgenteL-Martínez L.; **Supervision:** Arredondo T., Garatuza-Payan J and ArgenteL-Martínez L.

## DATA AVAILABILITY STATEMENT

Data sharing is not applicable.

## FUNDING

Consejo Nacional de Ciencia y Tecnología

<https://doi.org/10.13039/501100003141>

Grant No. 220788

Consejo Estatal de Ciencia y Tecnología - Sonora

Grant No. 20190430

## ACKNOWLEDGMENTS

To TecNM and ITSON.

## REFERENCES

- Allahverdiyev, T., Jahangirov, A. and Huseynova, I. (2018). Dry matter remobilization, yield and yield components of durum (*Triticum durum* Desf.) and bread (*Triticum aestivum* L.) wheat genotypes under drought stress. *Pakistan Journal of Botany*, 50, 1745-1751.
- Argentel-Martínez, L., Garatuzza-Payan, J., Armendáriz-Ontiveros, M. M., Yépez-González, E. A., Garibaldi-Chávez, J. M., Ortiz-Enríquez, J. E. and González-Aguilera, J. (2018). Caracteres fisiológicos y agronómicos de la variedad de trigo cristalino CIRNO C2008 confirman su estabilidad genética. *Agrociencia*, 52, 419-435.
- Argentel-Martínez, L., Garatuzza-Payan, J., Yépez, E. A., Arredondo, T. and de Los Santos-Villalobos, S. (2019). Water regime and osmotic adjustment under warming conditions on wheat in the Yaqui Valley, Mexico. *PeerJ*, 7, e7029. <https://doi.org/10.7717/peerj.7029>
- Ashraf, M. and Foolad, M. R. (2007). Roles of glycine betaine and proline in improving plant abiotic stress resistance. *Environmental and Experimental Botany*, 59, 206-216. <https://doi.org/10.1016/j.envexpbot.2005.12.006>
- Asseng, S., Ewert, F., Martre, P., Rötter, R. P., Lobell, D. B., Cammarano, D., Kimball, B. A., Ottman, M. J., Wall, G. W., White, J. W., Reynolds, M. P., Alderman, P. D., Prasad, P. V. V., Aggarwal, P. K., Anothai, J., Basso, B., Biernath, C., Challinor, A. J., Sanctis, G. and Zhu, Y. (2015). Rising temperatures reduce global wheat production. *Nature Climate Change*, 5, 143-147. <https://doi.org/10.1038/nclimate2470>
- Bala, P. and Sikder, S. (2018). Impact of Post-Anthesis Heat Stress on Physiological and Biochemical Traits of Wheat Genotypes. *Journal of Stress Physiology & Biochemistry*, 14, 27-37.
- Bates, L. S., Waldern, R. P. and Teare, I. D. (1973). Rapid determination of free proline for water-stress studies. *Plant and Soil*, 39, 205-207. <https://doi.org/10.1007/BF00018060>
- Bharati, S. P., Kant, R., Sharma, V. K. and Choudhary, V. K. (2018). Study of Effect of Plant Growth Regulating Hormones for Mitigating Heat Stress in Wheat. *Current Journal of Applied Science and Technology*, 31, 1-11. <https://doi.org/10.9734/CJAST/2018/45874>
- Blum, A. (2017). *Plant breeding for stress environments*. Boca Raton: CRC. <https://doi.org/10.1201/9781351075718>

- Bockheim, J. G., Gennadiyev, A. N., Hartemink, A. E. and Brevik, E. C. (2014). Soil-forming factors and Soil Taxonomy. *Geoderma*, 226-227, 231-237. <https://doi.org/10.1016/j.geoderma.2014.02.016>
- Chandra, K., Prasad, R., Thakur, P., Madhukar, K. and Prasad, L. C. (2017). Heat Tolerance in Wheat: A Key Strategy to Combat Climate Change through Molecular Markers. *International Journal of Current Microbiology and Applied Science*, 6, 662-675. <https://doi.org/10.20546/ijcmas.2017603.077>
- Dettori, M., Cesaraccio, C. and Duce, P. (2017). Simulation of climate change impacts on production and phenology of durum wheat in Mediterranean environments using CERES-Wheat model. *Field Crops Research*, 206, 43-53 <https://doi.org/10.1016/j.fcr.2017.02.013>
- Díaz-Padilla, G., Sánchez-Cohen, I., Guajardo-Panes, R. A., Del Ángel-Pérez, A. L., Ruíz-Corral, A., Medina-García, G. and Ibarra-Castillo, D. (2011). Mapeo del índice de aridez y su distribución poblacional en México. *Revista Chapingo Serie Ciencias Forestales y del Ambiente*, 17, 267-275. <https://doi.org/10.5154/r.rchscfa.2010.09.069>
- Dwivedi, S. K., Kumar, S. and Rao, K. K. (2018). Morpho-physiological responses of wheat genotypes under high temperature stress. In Z. Abbas, A. K. Tiwari and P. Kumar (Eds), *Emerging Trends of plant physiology for sustainable crop production* (p. 223-239). Boca Raton: Apple Academic. <https://doi.org/10.1201/b22338>
- El Sabagh, A., Hossain, A., Islam, M. S., Barutçular, C., Fahad, S., Ratnasekera, D., Kumar, N., Meena, R. S., Vera, P. and Saneoka, H. (2018). Role of osmoprotectants and soil amendments for sustainable soybean (*Glycine max* L.) production under drought condition: A review. *Journal of Experimental Biology and Agriculture Science*, 6, 32-41. [https://doi.org/10.18006/2018.6\(1\).32.41](https://doi.org/10.18006/2018.6(1).32.41)
- Elbashir, A. A. E., Gorafi, Y. S. A., Tahir, I. S. A., Elhashimi, A. M. A., Abdalla, M. G. A. and Tsujimoto, H. (2017). Genetic variation in heat tolerance-related traits in a population of wheat multiple synthetic derivatives. *Breeding Science*, 67, 483-492. <https://doi.org/10.1270/jsbbs.17048>
- Fan, Y., Ma, C., Huang, Z., Abid, M., Jiang, S., Dai, T., Zhang, W., Ma, S., Jiang, D. and Han, X. (2018). Heat priming during early reproductive stages enhances thermo-tolerance to post-anthesis heat stress via improving photosynthesis and plant productivity in winter wheat (*Triticum aestivum* L.). *Frontiers in Plant Science*, 9, 805. <https://doi.org/10.3389/fpls.2018.00805>
- Figueroa-López, P., Félix-Fuentes, J. L., Fuentes-Dávila, G., Valenzuela-Herrera, V., Chávez-Villalba, G. and Mendoza-Lugo, J. A. (2010). CIRNO C2008, nueva variedad de trigo cristalino con alto rendimiento potencial para el estado de Sonora. *Revista Mexicana de Ciencias Agrícolas*, 1, 745-749.
- Foroughbakhch-Pournavab, R., Bacópulos-Mejía, E. and Benavides-Mendoza, A. (2015). Efecto de la irradiación con UV-C en la germinación y vigor de tres especies vegetales. *Ecosistemas y Recursos Agropecuarios*, 2, 129-137.
- Garatuza-Payan, J., Argentel-Martínez, L., Yezpez, E. A. and Arredondo, T. (2018). Initial response of phenology and yield components of wheat (*Triticum durum* L.) CIRNO C2008 under experimental warming field conditions in the Yaqui Valley. *PeerJ*, 6, e5064. <https://doi.org/10.7717/peerj.5064>
- Grieve, C. M. and Grattan, S. R. (1983). Rapid assay for determination of water soluble quaternary ammonium compounds. *Plant and Soil*, 70, 303-307. <https://doi.org/10.1007/BF02374789>
- Hunt, J. R., Hayman, P. T., Richards, R. A. and Passioura, J. B. (2018). Opportunities to reduce heat damage in rain-fed wheat crops based on plant breeding and agronomic management. *Field Crops Research*, 224, 126-138. <https://doi.org/10.1016/j.fcr.2018.05.012>
- Hütsch, B. W., Jahn, D. and Schubert, S. (2018). Grain yield of wheat (*Triticum aestivum* L.) under long term heat stress is sink limited with stronger inhibition of kernel setting than grain filling. *Journal of Agronomy and Crop Science*, 205, 22-32. <https://doi.org/10.1111/jac.12298>
- Inman, D., Khosla, R. and Mayfield, T. (2005). On-the-go active remote sensing for efficient crop nitrogen management. *Sensor Review*, 25, 209-214. <https://doi.org/10.1108/02602280510606499>
- [IPCC] Intergovernmental Panel on Climate Change. (2014). *Climate Change 2014: Mitigation of Climate Change*. Cambridge: Cambridge University <https://doi.org/10.1017/CBO9781107415416>

- Jaworsky, E. G. (1971). Nitrate reductase assay in intact plants tissues. *Biochemical and Biophysical Research Communications*, 43, 1274-1279. [https://doi.org/10.1016/S0006-291X\(71\)80010-4](https://doi.org/10.1016/S0006-291X(71)80010-4)
- Jin, N., Ren, W., Tao, B., He, L., Ren, Q., Li, S. and Yu, Q. (2018). Effects of water stress on water use efficiency of irrigated and rainfed wheat in the Loess Plateau, China. *Science of The Total Environment*, 642, 1-11. <https://doi.org/10.1016/j.scitotenv.2018.06.028>
- Kimball, B. A. (2015). Using canopy resistance for infrared heater control when warming open-field plots. *Agronomy Journal*, 107, 1105-1112 <https://doi.org/10.2134/agronj14.0418>
- Kocheva K., Kartseva, T., Nenova, V., Georgiev, G., Brestič, M. and Misheva, S. (2020). Nitrogen assimilation and photosynthetic capacity of wheat genotypes under optimal and deficient nitrogen supply. *Physiology and Molecular Biology of Plants*, 26, 2139-2149. <https://doi.org/10.1007/s12298-020-00901-3>
- Kurepin L. V., Ivanov, A. G., Zaman, M., Pharis, R. P., Allakhverdiev, S. I., Hurry, V. and Hüner, N. P. A. (2015). Stress-related hormones and glycinebetaine interplay in protection of photosynthesis under abiotic stress conditions. *Photosynthesis Research*, 126, 221-235. <https://doi.org/10.1007/s11120-015-0125-x>
- Martínez, G. A., Civello, P. M., Chaves, A. R. and Añón, M. (2001). Characterization of peroxidase-mediated chlorophyll bleaching in strawberry fruit. *Phytochemistry*, 58, 379 -387. [https://doi.org/10.1016/S0031-9422\(01\)00266-7](https://doi.org/10.1016/S0031-9422(01)00266-7)
- McCready, R. M., Guggolz, J., Silveira, V. and Owens, H. S. (1950). Determination of starch and amylose in vegetables: Application to peas. *Analytical Chemistry*, 22, 1156-1158. <https://doi.org/10.1021/ac60045a016>
- Mertler, C. A. and Reinhart, R. V. (2016). *Advanced and multivariate statistical methods: Practical application and interpretation*. New York: Routledge. <https://doi.org/10.4324/9781315266978>
- Pearson, K. (1901). Notes on regression and inheritance in the case of two parents, *Proceedings of the Royal Society of London*, 58, 240–242.
- Ram, K., Rajkumar, S. and Munjal, R. (2018). Stem reserve mobilization in relation to yield under different drought and high temperature stress conditions in wheat (*Triticum aestivum* L.) genotypes. *International Journal of Current Microbiology and Applied Science*, 7, 3695-3704. <https://doi.org/10.20546/ijcmas.2018.704.415>
- Rezaei, E. E., Siebert, S., Manderscheid, R., Müller, J., Mahrookashani, A., Ehrenpfordt, B., Haesch, J., Weigel, H.-J. and Ewert, F. (2018). Quantifying the response of wheat yields to heat stress: The role of the experimental setup. *Field Crops Research*, 217, 93-103. <https://doi.org/10.1016/j.fcr.2017.12.015>
- Rohlf, F. J. and Fisher, D. R. (1968). Tests for hierarchical structure in random data sets. *Systematic Biology*, 17, 407-412. <https://doi.org/10.1093/sysbio/17.4.407>
- Shabala, S. and Munns, R. (2017). Salinity stress: physiological constraints and adaptive mechanisms. In S. Shabala, Ed., *Plant Stress Physiology* (p. 24-63). Wallingford: CABI.
- Slawky, G. and Rodier, M. (1988). Biosynthetically active glutamine synthetase in the marine diatom *Phaeodactylum tricorutum*: optimization of the forward–reaction assay. *Marine Biology*, 97, 269-274. <https://doi.org/10.1007/BF00391312>
- Svantesson, T. and Wallace, J. W. (2003). Tests for assessing multivariate normality and the covariance structure of MIMO data. In 2003 *IEEE International Conference on Acoustics, Speech, and Signal Processing, 2003. Proceedings*. (ICASSP '03) (pp. IV-656). Hong Kong: IEEE. <https://doi.org/10.1109/ICASSP.2003.1202728>
- Thomason, K., Babar, M. A., Erickson, J. E., Mulvaney, M., Beecher, C. and MacDonald, G. (2018). Comparative physiological and metabolomics analysis of wheat (*Triticum aestivum* L.) following post-anthesis heat stress. *PLoS ONE*, 13, e0197919. <https://doi.org/10.1371/journal.pone.0197919>

- Xue, L., Wang, H. F., Wang, Q., Szklarz, G. D., Domanski, T. L., Halpert, J. R. and Correia, M. A. (2001). Influence of P450 3A4 SRS-2 residues on cooperativity and/or regioselectivity of aflatoxin B1 oxidation. *Chemical Research in Toxicology*, 14, 483-491. <https://doi.org/10.1021/tx000218z>
- Yáñez, A., Tapia, G., Guerra, F. and del Pozo, A. (2017). Stem carbohydrate dynamics and expression of genes involved in fructan accumulation and remobilization during grain growth in wheat (*Triticum aestivum* L.) genotypes with contrasting tolerance to water stress. *PloS ONE*, 12, e0177667. <https://doi.org/10.1371/journal.pone.0177667>
- Yang, J., Zhang, J., Liu, L., Wang, Z. and Zhu, Q. (2002). Carbon remobilization and grain filling in Japonica/Indica hybrid rice subjected to postanthesis water deficits. *Agronomy Journal*, 9, 102-109.
- Yang, D., Li, Y., Shi, Y., Cui, Z., Luo, Y., Zheng, M., Wang, Z., Chen, J., Li, Y., Yin, Y. and Wang, Z. (2016). Exogenous cytokinins increase grain yield of winter wheat cultivars by improving stay-green characteristics under heat stress. *PloS ONE*, 11, e0155437. <https://doi.org/10.1371/journal.pone.0155437>
- Yang, X., Tian, Z., Sun, L., Chen, B., Tubiello, F. N. and Xu, Y. (2017). The impacts of increased heat stress events on wheat yield under climate change in China. *Climatic Change*, 140, 605-620. <https://doi.org/10.1007/s10584-016-1866-z>
- Yoshida, S., Forno, D. A., Cock, J. H. and Gomez, K. A. (1971). *Laboratory manual for physiological studies of rice*. Manila: The International Rice Research Institute.
- Zadocks, J. C., Chang, T. T. and Konzak, C. F. (1974). A decimal code for the growth stages of cereals. *Weed Research*, 14, 415-421. <https://doi.org/10.1111/j.1365-3180.1974.tb01084.x>